

The effect of firm subsidies on credit markets

March 6, 2026

Abstract

Governments use firm subsidies to spark corporate investment, which may have repercussions in credit markets though. To test for potential credit market distortions due to this economic policy, we combine project-level information for the largest regional economic development program in German history with bank lending and firm borrowing over a long horizon: 1998–2019. Firm subsidies associate with larger lending volumes provided by banks. On the flip-side of credit markets, we document increased corporate borrowing. Importantly, we find neither evidence of excessively risky lending by banks nor crowding-out of credit to nonsubsidized firms. Firm subsidies support lending especially when credit constraints are elevated during the financial crisis. Overall, firm subsidies unfolded a positive multiplier effect in regional credit markets in our setting.

Keywords: Government subsidies; Financial intermediation; Bank stability

JEL Classification: G21, G28, H25

1 Introduction

Government subsidies to firms are canonical tools of economic policy if market frictions prevent the optimal allocation of capital and labor in incomplete markets (Criscuolo et al., 2019). The (in)ability of subsidies to foster investment, employment, and innovation has been studied intensively (Cerqua and Pellegrini, 2014; Ehrlich and Seidel, 2018; Brachert et al., 2019; Criscuolo et al., 2019; Falck et al., 2019; Siegloch et al., 2025). However, the effects of non-repayable equity transfers on (regional) credit markets remain surprisingly unclear despite the pivotal role of banks to finance corporate activities. We seek to fill this gap.

A key challenge is that equity transfers by the government—subsidies for short—have a twofold effect: how firms take investment decisions *and* how banks make lending choices. Therefore, we study credit observed on both banks’ and firms’ balance sheets to test if and how subsidies distort corporate credit markets. This dual perspective is critical to unveil opposing forces that operate in credit markets, as illustrated by the following three scenarios.

First, if subsidies induce firms to invest more, and as long as some of this additional investment is financed by debt, credit markets would exhibit a *loan expansion* due to increased bank lending and firm borrowing. Second, if equity subsidies instead displace bank funding on firms’ balance sheets, credit market effects are unclear. If subsidized firms *substitute* bank debt with equity transfers, regional credit markets contract. But if banks can compensate for less credit demand by subsidized firms by lending more to non-subsidized ones, the *reallocation* of banks’ loan portfolios has no aggregate effects in credit markets. Third, if equity transfers render subsidized firms more attractive borrowers, a *crowding-out* scenario of non-subsidized firms in corporate credit markets could result. These cases illustrate the need to consider *both* banks’ and firms’ balance sheets to separate these counteracting forces.

We isolate these different scenarios by combining unique subsidy data at the project level from the most important place-based policy scheme in Germany, the Improvement of Regional Economic Structures program (GRW) (“*Gemeinschaftsaufgabe Verbesserung der regionalen Wirtschaftsstruktur*”) with detailed bank and firm financial data. GRW subsidies are non-

repayable equity transfers by the federal government, for which firms can apply subject to regional and administrative conditions that are arguably outside the control of firms and banks alike.¹ The extensive sample period from 1998 to 2019 allows us to evaluate credit market responses over the entire economic cycle. We isolate bank lending responses due to relationships with subsidized firms, where bank-firm links result from string-matching firms' and regional banks' names in historical vintages of the Dafne database (Dwenger et al., 2020).

The headline results support the *loan expansion* scenarios: regional banks with more exposure to subsidized firms increase mean total lending between 1998 to 2019. This effect is economically significant. We estimate that an increase of banks' exposures to GRW subsidies is associated with an average 2% hike in lending. The magnitude of this loan expansion increases by approximately a quarter when considering firms, which have an arguably above average need for external funding. This main finding of an increased lending volume based on bank-level regressions also obtains from a firm-level perspective. Corporate borrowing increases significantly by 76% when realizing a subsidized project. Importantly, we do not find evidence for crowding out effects for non-subsidized firms. Following Berg et al. (2021), we estimate quantitatively moderate positive spillover effects of GRW subsidies on the borrowing patterns of average subsidized and non-subsidized firms. On average, subsidy spillovers associate with 10% more debt among non-subsidized firms within the same region as the average subsidized firm. Non-subsidized peers that borrow from the same bank as the average subsidized firm exhibit 1.8% more debt due to spillover effects. These results indicate the absence of crowding out effects and suggest that GRW subsidies unfolded a positive multiplier effect in regional credit markets in line with the *loan expansion hypothesis*. Importantly, subsidized firms exhibit generally neither higher credit risk nor is banks' default risk significantly affected if they are more exposed to subsidized firms. Likewise, we find no evidence that particularly weak firms match with particularly weak banks, all of which bodes well for financial stability not being impaired by this place-based program.

¹We devote section 2.2.1 to a detailed description of the institutional background.

An important innovation of our setting is that the institutional framework of the GRW program mitigates endogeneity concerns that plague most evaluations of place-based programs. First, firms that apply for subsidies need to file a business plan that is audited by a bank. This audit is almost always done by relationship banks, which maintain very long-term ties, especially with their small and medium enterprise (SME) customers that we study (Popov and Rocholl, 2018; Bersch et al., 2020). Second, only non-financial firms located in GRW eligible regions can apply for subsidies. Hence, banks cannot be directly exposed. Third, the eligibility and funding intensity² of regions is set by the European Union (EU) and therefore orthogonal to the actions of analyzed regional banks in the run-up to GRW funding periods. Fourth, the exact modalities of the GRW program are adjusted every seven years, which introduces uncertainty about program accessibility.

This paper relates mainly to two strands of literature. The first focuses on *firm behavior* and regional developments due to place-based policies. GRW effects on regional economic development and firm outcomes have been studied by, e.g., Brachert et al. (2018a, 2019) and Siegloch et al. (2025). The effects of programs in other countries on firm developments are evaluated by, among others, Bronzini and de Blasio (2006) and Cerqua and Pellegrini (2014) for Italy or Criscuolo et al. (2019) for the UK. Aside from reporting mixed output and employment effects, these studies remain silent on the financial viability of subsidized firms and the possible implications for their creditors, which is an important gap that we seek to fill with this paper. A few related studies touch upon the role of such policies for firms' financial constraints. Banerjee and Duflo (2014) analyze a targeted lending program in India to evaluate whether firms face a credit constraint and show that targeted lending succeeded to fund more production instead of substituting other types of credit. For a credit certification program in Portugal, Custodio et al. (2021) find that eligible firms benefit from better credit conditions and invest more, at least during crisis times. We add to this literature an evaluation of subsidy effects on *regional credit markets* and banking stability.

²Defined as the maximum amount of subsidies relative to the investment volume.

A second strand of studies investigates the effects of government policies that directly *guarantee* the credit risk exposure of banks for selected firms. Wilcox and Yasuda (2019) find that Japanese banks receiving more guaranteed loans became riskier but also issued more non-guaranteed loans. In contrast, Altavilla et al. (2021) show for loan guarantees issued during the Covid-19 pandemic and based on euro-area credit registry data that guarantees ensured credit supply but partially substituted non-guaranteed loans. Carletti et al. (2023) show theoretically that loan guarantees do not necessarily increase financial fragility if depositors are less likely to run and banks keep on monitoring. Brown and Earle (2017) and Bachas et al. (2021) study the loan support program by the Small Business Administration (SBA) to smaller firms in the U.S. and document an increase in employment among recipient firms as well as an increase in credit supply in response to the program. Evidence on earmarked loans in Brazil by Haas Ornelas et al. (2019) suggests that if private banks select suitable receivers of such government loans, this can have allocative effects. In contrast to the literature on loan guarantees, we evaluate the effects of governmental *subsidies* to corporate firms on bank outcomes. We hypothesize that banks' lending volumes and stability can be affected if banks are involved in routing subsidies from the government to non-financial firms.

2 Priors and institutional background

2.1 Hypotheses and identification

A crucial reason for the inherent ambiguity how subsidies affect firm borrowing D or bank lending L is due to the missing counterfactual, which investment projects would also have been conducted without a subsidy. Suppose that only with a subsidy S the net present value of investment I is positive, thereby also increasing aggregate investment (see, e.g., Brachert et al., 2018a). As long as a fraction of this project is financed by debt, banks might supply additional credit, thereby giving rise to what we coin the “*loan expansion hypothesis*”. But if banks mobilize this additional L by reducing their credit exposure to non-subsidized firms,

we would expect to observe no (significant) loan responses on banks’ balance sheets and reduced borrowing by non-subsidized firms, D_{NS} , that are connected to the same bank.

Testing the “*loan expansion hypothesis*” vis-à-vis such a “*crowding-out hypothesis*”—and other alternatives illustrated below,—requires to analyze both loans L provided by banks *and* debt borrowed by subsidized (D_S) *as well as* non-subsidized (D_{NS}) firms in response to transfer payments. To our knowledge, we are the first to conduct such a joint assessment of both sides in credit markets, lenders and borrowers. Let us fix next our priors more explicitly for cases where subsidies are allocated to positive and negative NPV projects, respectively.

Credit market responses are even more ambiguous if subsidized projects had been conducted anyways. Suppose that a firm i plans an investment project of unity size I , which is funded by a share of equity $E = \alpha I$ and bank debt $D = \beta I$, respectively. The firm executes the project iff the expected return from the project r_I^* exceeds the cost of capital, which equals the weighted cost of equity r_E and debt r_D , $\alpha r_E + \beta r_D$, faced in financial markets. Assuming a positive net present value project (NPV) also without the subsidy, $\alpha r_E + \beta r_D \leq r_I^*$, the initial funding structure to which we compare four cases is depicted in Panel (a) of Figure 1.

[Insert Figure 1 here]

We summarize the expected correlations between subsidy indicators, loans in bank-level regressions, and debt in firm-level regressions in Table 1. Panel I depicts cases where we assume that the project would have been conducted also without a subsidy.

[Insert Table 1 here]

If a subsidy of $\gamma I = S$ substitutes equity (Panel (b)), the cost of capital are reduced for a project of given size I . Since we assume $\alpha r_E + \beta r_D < r_I^*$, the project would have been conducted anyways. Relative to this counterfactual, aggregate demand by both subsidized D_S and non-subsidized firms D_{NS} remains unaffected. Alternatively, the subsidy might neither replace E nor D , but scales the originally planned project I by S (Panel (d)). In this scenario, aggregate investment expands. Yet subsidies do not unfold a multiplier effect on aggregate

credit demand, which remains also in this case unaffected. Therefore, we coin these scenarios the “*irrelevance hypothesis*”. We expect neither significant relationships between subsidy exposure and observed lending in bank-level regressions nor when comparing corporate debt between subsidized and non-subsidized firms.

Panel (c) of Figure 1 illustrates the case when subsidized firms invest in projects of identical size I , but reduce leverage and demand less credit $\Delta D_S < 0$, where Δ denotes changes. More subsidies without an increase in aggregate investment spending will therefore substitute bank credit as long as loan supply L is variable. Under this “*credit substitution hypothesis*”, we thus expect negative correlations between subsidy indicators, lending in bank-level, and borrowing in firm-level regressions. Alternatively, if loan supply is constant $\Delta L = 0$, banks can reallocate lending towards non-subsidized firms $\Delta D_{NS} > 0$. This “*reallocation hypothesis*” would thus be empirically supported if subsidy exposure and corporate lending do not correlate significantly in bank-level regressions while the relationship of corporate debt between subsidized and non-subsidized firms exhibits a significantly negative correlation.

Panel (e) depicts a scenario, in which subsidies S to profitable projects unfold a multiplier effect on aggregate investment activity and in credit markets. In addition to scaling the investment project by S , subsidized firms demand additional debt $\Delta D_S > 0$ to increase project size to $I_S > I_{NS} + S > 1$. This “*loan expansion hypothesis*” thus entails positive correlations between both bank debt and firm borrowing with respective subsidy indicators.

Finally re-consider situations when the subsidy is necessary to turn the project profitable, i.e. $\alpha r_E + \beta r_D > r_I^* > (\alpha - \gamma)r_E + \beta r_D$, in Panel II of Table 1. This scenario implies that the subsidized project is conducted in addition to non-subsidized ones, thereby always increasing credit demand of subsidized firms $\Delta D_S > 0$. Aggregate credit market effects will depend on banks adjustments. If banks do not increase total lending, i.e. if $\Delta L^S = 0$, a project as depicted in case (b) of Figure 1 would imply that credit to non-subsidized firms D_{NS} is reallocated to meet higher demand by subsidized ones D_S . Put differently, GRW subsidies would crowd-out lending to non-subsidized incumbent borrowers similar to the

effects documented for credit guarantees that are granted to selected recipients (see, e.g., Core and De Marco, 2021; Custodio et al., 2021; Minoiu et al., 2021; Koulischer et al., 2021). Consequently, these cases would be in line with a “*crowding-out hypothesis*”. If, in contrast, banks are unconstrained and willing to provide additional lending, $\Delta L > 0$, we would observe empirical support of the “*loan expansion hypothesis*”.

2.2 Institutional background

The approach to identify credit market distortions due to subsidies exploits the uncertainty resulting from the institutional framework to determine regional eligibility and aid intensities. It hinges on three requirements: (i) an observable and relevant subsidy program, (ii) a mechanism how banks participate in the policy process, and (iii) a quasi-random allocation of subsidies to firms. We describe how the institutional GRW features meet these issues.

2.2.1 Improvement of Regional Economic Structures (GRW) program

Since 1969, GRW subsidies are a place-based policy tool in West Germany, spanning the reunified country since 1990. The aim is to reduce regional disparities in terms of employment and income by stimulating investment. Federal and State governments jointly funded a budget of 68 billion Euros between 1991 and 2019, rendering the GRW the most important place-based subsidy program to foster regional development in Germany. Between 2000 and 2017, around 30% of the total investment volume in the manufacturing sector was co-funded by the GRW program. We observe the universe of project-specific subsidies to mostly small and medium-sized enterprises (SME) for three subsidy periods: 2000-2006, 2007-2014, and 2015-2020, which we describe together with all other data in Section 3.2.³

Federal states (“Bundesländer”) administer the operational funding process and determine access to the GRW program in several steps. First, only non-financial firms that are located in a county nested in an eligible region, which we define shortly, can apply. Hence,

³Formally, the second interval ended in 2013, but the effective date of change was 1.7.2014. We assign 2014 (2015) to the period 2007-2013 (2014-2020) and end the sample in 2019 due to lacking data for 2020.

outright self-selection of banks into treatment is ruled out. Second, applicants need to fulfill one of two requirements. Either the investment project is accompanied by an increase in the labor force by 15%, or the planned investment expenditures exceed 50% of average depreciation over the last three years before the application is filed to ensure that the project is sizable. Also, at least 50% of revenues need to be inter-regional. Third, the firm has to file a form that specifies the investment project and a bank has to audit the financing plan before the firm can finalize the application and deliver it to its State Government. Fourth, firms need to apply for subsidies in the state in which they are located. Paired with the spatial delineation of credit markets that we detail below, this regional setting allows us to control for unobservable confounders of banks' and firms' credit responses, e.g. state business cycles.

Each GRW application is evaluated to ensure it aligns with the program targets. Formal rejections are very rare since applicants go through intense personal consultation with the responsible administrators of the GRW. Applications are typically approved by the government authorities when all requirements are fulfilled and the financing plan is approved by a bank. Subsidized projects should be completed within three years. GRW subsidies take the form of outright cash transfers that increase equity capital without diluting incumbents' ownership rights that are paid in full once the physical investment is finished and the funding agreements are entirely met. GRW funds are tied to the project detailed in the application and need not to be repaid in general.

2.2.2 The role of banks

The German financial system is characterized by de jure and de facto regional delineation of credit markets (Puri et al., 2011; Dam and Koetter, 2012; Gropp et al., 2013) and relationship banking (Elsas and Krahn, 1998; Lehmann and Neuberger, 2001; Elsas, 2005; Bersch et al., 2020). Especially regional savings and cooperative banks establish close and long-lasting so-called "Hausbank" relationships with SME, which mitigates concerns about indirect self-selection by banks into treatment due to anticipated GRW subsidies to firms

(Popov and Rocholl, 2018; Dwenger et al., 2020; Koetter et al., 2020). The requirement to audit investment plans by a bank underpins that relationship lenders are an integral component of the GRW program to screen qualifying investment projects. GRW applicants are mostly SME that can inquire with any bank to evaluate their plans, but conventionally resort to their Hausbank for an assessment.

In sum, practitioner interviews do not indicate a systematic matching bias between banks' lending and firms' borrowing choices conditional on GRW subsidies. We test below for endogenous matching of banks into relationships with subsidized firms (see Section 4.5.3).

2.2.3 Quasi-random subsidy allocation

We argue that the allocation of subsidies to firms is sufficiently hard to anticipate for firms and close-to-random for banks for three main institutional reasons: (i) the modalities how to designate regions eligible for GRW subsidies; (ii) the determination of aid intensity at the EU level, and (iii) dynamic adjustments of these modalities for subperiods of the program.

Eligibility Access to state aid under the GRW program is determined at the EU level and depends on whether a labor market region (LMR) is eligible. LMRs are defined by commuting patterns rather than administrative boundaries and nest multiple counties (“Kreise”), which define regional credit markets. Prior to each EU funding period, a structural weakness score (SWS) is calculated for each of the 258 (as of 2019) LMR based on four socio-economic indicators.⁴ Weighted individual indicators determine the final score, according to which LMRs are (inversely) ranked. Weak regions receive subsidies until the population threshold of approximately 40% is reached.⁵ In sum, GRW access is arguably exogenous to individual firms and banks as neither one can anticipate if their county will be eligible for state aid.

Aid intensity is the maximum share of a subsidy permitted by the GRW program modalities in the total investment volume. This parameter is also determined by LMR, adding

⁴Underemployment, gross wages and salaries, quality of infrastructure, and projected employment.

⁵Figure A1 illustrates how the eligibility of a LMR depends on the population threshold and the weakness score. The population threshold for Germany resulted from initial calculations of the EU Commission for the first program period and remained fixed at a level of around 40% afterwards.

uncertainty for firms even in eligible regions about the intensive margin of GRW subsidies (Brachert et al., 2018a; Siegloch et al., 2025). Aid intensities depend on firms' size and on predetermined performance scores of all other regions within the EU. Between 2000 and 2014, subsidies could amount to 50% of the planned investment volume for the smallest firms in the most disadvantaged regions. This ratio was at most 40% in the last period 2015-2020.⁶ Given the determination of maximum intensity relative to all EU regions, firms (and their banks) cannot actively affect their treatment status.

Dynamics The aggregate volume of the subsidy program available to German firms declined over time due to the enlargement of the EU. Previously eligible regions did not rank among the most disadvantaged ones in later subsidy periods and firms in selected regions faced more difficult access to subsidies in more recent years. Other regions are among the most subsidized ones across different phases of the GRW program while some regions have never had access to it. To account for this uncertainty about (not) being in an eligible region, we limit the sample in robustness tests to regions facing higher uncertainty regarding future eligibility, namely those that rank from the 25th to the 75th percentiles of the structural weakness score distribution. A related concern is that banks from eligible regions might adjust their behavior during a program period. Therefore, we also study only the initial years of each funding period for robustness.

3 Methods and data

We first present the bank- and firm-level specifications to identify credit market responses to firm subsidies, followed by a description of the employed data.

⁶Figure A2 shows the average intensity of GRW program assistance over the years 2000-2019 in German counties. Out of the 403 counties that exist in Germany today, 216 were eligible for GRW subsidies during the sample period at least once while 76 (140) are located in the East (West) of Germany.

3.1 Empirical specifications

3.1.1 Bank-level regressions

To test whether subsidies granted under a place-based program distort regional credit markets, we first specify the natural logarithm of bank b 's lending volume L in year t as the dependent variable in the following panel regression model:

$$\ln L_{bt} = \beta_0 + \beta_1 \text{Subsidy}_{bt} + \beta_2 X_{bt-1}^{\text{Bank}} + \beta_3 \bar{X}_{bt-1}^{\text{Firm}} + \alpha_b + \alpha_{st} + \epsilon_{bt}. \quad (1)$$

We estimate parameters for a sample of all German savings and cooperative banks between 1998 and 2019. Standard errors are clustered at the bank level. The coefficient β_1 gauges the role of a bank's exposure to firms receiving a subsidy. The baseline specification of Subsidy_{bt} is the ratio of the number of links to subsidized firms relative to the number of all firm links of a bank.⁷ We consider links to treated firms throughout the entire period of the subsidized investment project (three years), a choice that we scrutinize below. If a subsidized firm has relationships with two banks, both are considered equally exposed to the GRW program.

The absence of a comprehensive credit register implies that we can neither observe banks' loan supply L nor corporate debt demand D directly.⁸ However, we can control for observable factors that arguably affect these relationships. Although this sample of regional savings and cooperative banks is homogeneous in terms of shared business models, we use bank controls X_{bt-1}^{Bank} to account for systematically different capacities to lend and heterogeneous risk preferences. We specify bank capitalization, the management quality (cost-to-income ratio), bank profitability (return on assets), the liquidity ratio (liquid assets to total assets), and size (natural logarithm of total assets). All controls are lagged by one period to reduce simultaneity issues. Time-invariant bank traits are controlled for by bank fixed effects α_b . We

⁷In Section 4.1, we scrutinize this baseline definition by gauging subsidy exposure for credit constrained firms only and by specifying a proxy for the intensive margin of banks' subsidy exposures.

⁸The German central bank collects information on large exposures and aggregate borrower statistics by sector. But credit register data that permit to identify loan supply and demand as in, e.g., Portugal (Iyer et al., 2014), Uganda (Abuka et al., 2019) or Spain (Jiménez et al., 2012, 2014), is absent in Germany.

gauge potential drivers of firms’ loan demand D , by the same traits ($\overline{X}_{bt-1}^{Firm}$), i.e. capitalization, profitability, liquidity, and size. We average firm controls per bank b across all existing firm-relationships of each bank. State-time fixed effects α_{st} capture state-level business cycles and associated loan demand dynamics. In robustness tests, we add the structural weakness score of the LMR in which the bank is located as well as county-level controls. Finally, we also create a matched sample based on bank-level controls X_b^{Bank} in the years before banks are exposed to subsidized firms for the first time in Section 4.1.⁹

3.1.2 Firm-level regressions

As discussed in Section 2.1, we test the loan expansion hypothesis vis-à-vis the alternatives summarized in Table 1 by jointly considering subsidy effects on both banks’ and firms’ balance sheets. To test if bank lending responses L are echoed by borrowed debt D responses, we specify a firm-level regression that explains the natural logarithm of firm f ’s corporate bank debt volume D in year t :

$$\ln D_{ft} = \gamma_0 + \gamma_1 \text{Subsidy}_{ft} + \gamma_2 X_{ft-1}^{Firm} + \alpha_f + \alpha_{st} + \varepsilon_{ft}. \quad (2)$$

Here, the variable Subsidy_{ft} is an indicator equal to one if the firm receives a subsidy and zero in the years before.¹⁰ We include firm (α_f) and state-time (α_{st}) fixed effects and cluster standard errors at the firm level. We estimate the parameters of Equation (2) for a sample of both subsidized and non-subsidized firms. As shown in Figure A3, subsidized firms differ from non-subsidized ones. Therefore, we match control firms with two increasingly conservative

⁹Specifically, we use the coarsened exact matching approach as applied by Brachert et al. (2018a) and match ever- and never-exposed banks from the same state and banking group based on X_b^{Bank} . For each variable in X_b^{Bank} , we create quartile bins and match ever-exposed banks b to a never-exposed counterpart in the year prior to when a bank is exposed for the first time. By ‘ever-exposed banks,’ ‘ever-subsidized firms,’ and ‘ever-eligible regions,’ we refer to banks that were linked to a subsidized firm, firms that received a subsidy, and regions that were eligible for the GRW program at least once during the sample period, respectively. Table A2 in the Online Appendix shows descriptive statistics for the matched bank sample.

¹⁰We also approximate the intensive margin of firms’ debt exposures in Section 4.1. Recall from Section 2.2 that subsidies are equity grants. Therefore, total firm borrowings, the dependent variable $\ln D_{ft}$, is not contaminated by subsidy volumes, which would give rise to a mechanistic relationship.

variants of the coarsened exact matching described above. First, we match non-subsidized firms by drawing from the universe of German firms covered by the Amadeus database from the same 3-digit NACE code to control for industry-level shocks. We match within quartile bins created per firm trait X_f^{Firm} : total assets, capitalization, the cash ratio, and the percentage change in fixed assets based on the values of the year before a firm received a subsidy for the first time.¹¹ Second, we match control group firms on the same firm traits, but require potential counterfactual firms to be from the same LMR and 2-digit NACE industry code as the treated ones. The matched estimation sample spans the period from 2002 to 2020 and we specify X_{ft-1}^{Firm} as controls throughout.

3.2 Data

Table 2 summarizes variable definitions and the main data sources. First, we gather data from Bankscope and Orbis Bankfocus to study banks' responses following their exposure to subsidized firms. Second, we gauge banks' exposure to the GRW program by matching subsidized firms with their Hausbank using the Dafne database. Third, we obtain granular GRW data on a firm's subsidy amount and investment volume per project, from which we compute banks' exposures to subsidized firms and firms' subsidy indicators. Fourth, we link subsidized firms to Amadeus to obtain firm-level variables and a sample of control firms.

[Insert Table 2 here]

Bank-level data: The bank-level analysis relies on a sample of 1,202 savings and cooperative banks in Germany from 1998 to 2019. We combine the Bankscope and Orbis Bankfocus databases using a correspondence file of variable labels provided by the vendor, Bureau van Dijk, to obtain a long history of financial accounts. To maximize coverage and availability, we switch databases in 2013 and harmonize the data in five steps. First, all monetary amounts are in Euros using annual average exchange rates. Second, we measure all level variables in

¹¹We omit ROA to increase the sample size, but results are qualitatively identical when including it and are available upon request.

thousands of Euros. Third, we only sample regional savings and cooperative banks. Based on bank names and web searches, we verify all cases where the relevant variable describing the “specialization type” differed across the two datasets. Fourth, we use unconsolidated data to gauge regional banks’ choices and draw on consolidated data only if the former is unavailable. Fifth, we remove implausible observations defined as negative assets, equity or loan amounts, and ratios below 0% or above 100%. Table 3 summarizes the dependent and control variables, which are winsorized at the 1st and 99th percentiles. Mean capital ratios are 7.3% and the natural logarithm of banks’ assets amounts to 13.8.

[Insert Table 3 here]

Panel (a) of Figure 2 shows the evolution of banks’ exposure to subsidized firms for those banks maintaining relationships with subsidized firms. The share of subsidized firms in banks’ customer portfolios ranges between zero and 4.6%. Banks that are located in eligible regions exhibit a higher exposures to subsidized firms, which underpins the close spatial proximity between regional banks and SME borrowers. The share of subsidized firms per bank is small, but Panel (b) shows that borrowers benefit substantially from subsidies. Aid intensity amounts on average to 27.7% (see also Panel (a) of Table 4).

[Insert Figure 2 here]

[Insert Table 4 here]

The average share of banks that are linked to subsidized firms is a sizable 42% whereas the share of subsidized firms in banks’ portfolio is small as shown by Figure 2. Panel (b) in Table 4 shows descriptive statistics for banks’ exposure to subsidized firms across the subsidy periods. The number of exposed banks is higher in eligible regions, which reflects the role of distance: banks maintain relationships to more subsidized firms if they are located in eligible regions themselves (section i)). The average share of exposed banks measured at the county level is the highest between 2007 and 2014, for both banks located in eligible and non-eligible regions, and amounts up to 81% in eligible regions (section ii)). Considering only the

sample of banks exposed to subsidized firms, section iii) confirms that banks' average subsidy exposure is higher for banks in eligible regions. The two alternative exposure measures are more restrictive and decline on average. The exposure to subsidized firms tends to be smallest in the last subsidy period (2015-2020) in line with the declining size of the program in German regions driven by the EU enlargement in previous years.

Finally, Columns 4-6 of Table 3 show summary statistics of bank characteristics by banks' exposure status. Banks with a non-zero exposure to subsidized firms show lower levels of capitalization, are larger and linked to firms with on average more capital but less liquidity. Given these differences, we add respective controls in our model as outlined above and re-run estimations on a matched sample of exposed and non-exposed banks for robustness.

Bank-firm link: To establish a bank-firm link, we use the survey-based Dafne dataset provided by Creditreform. Creditreform considers firms for which balance sheets and annual income statements are available without applying a size threshold. The database reports a bank-firm link if managers report a bank to be their main relationship bank ("Hausbank") (Popov and Rocholl, 2018; Dwenger et al., 2020; Koetter et al., 2020). We proceed similar to Koetter et al. (2020) but extend the bank-firm links to recent years. Reported links exhibit breaks in the raw data due to the survey nature of the database. Specifically, 69% of all bank-firm pairs have no gaps in the reported years, 16% have gaps of at most one year, 9% of at most two years, 3% of at most three years, and 1% of at most four years. Since bank-firm links tend to be stable over time in practice, we adjust the data in the following ways. First, we use a 3-year rolling window approach to fill the gaps in the reported bank-firm links. As a result, 98% of bank-firm pairs exhibit no more gaps in their links during the sample period. Second, we extend the links symmetrically to optimize coverage.¹² Finally, we adjust for outliers in terms of banks having an implausibly low number of reported firm links and remove banks with less than 100 firms in a given year. These cases mainly occur

¹²The Dafne database provides data from 2003 onwards and we extend the data backward such that the bank-level analysis can start in 1998. For any bank-firm pair with a shorter-than-median relationship length of the bank, we extend links backward and forward by at least three years in both directions and up to the median length.

in the initial years of the sample period. The average bank is linked to 962 firms in the final sample, whereas the maximum number of firm links equals 18,590.

Firm-level data: We obtain information on firms' access to subsidies from the Federal Office for Economic Affairs and Export Control, which is responsible for the monitoring of the overall funding process. Most subsidized firms are from the manufacturing sector (60%), of which half are high- or medium-high-technology firms, followed by knowledge-intensive services (17%), accommodation (11%), and other (12%) industries. We observe on a yearly basis which firms received a subsidy, the size of the subsidy, and the total investment volume of the subsidized project. The GRW program subsidizes investment projects at the plant and not at the firm level to which we match banks. Because 85% of the subsidized firms in the sample are single-plant firms, i.e. those where firm and plant location are identical, sample selection due to the funding of multi-plant firms is a subordinate issue.

On average, 2,282 projects are subsidized per year with 350,000 Euros. Around 56% of subsidized firms apply for and receive a subsidy only once. Panel (a) of Table 4 depicts more detailed breakdowns, such as the total amount of subsidies over the different periods and the number of subsidized firms. Over time, and driven by the EU enlargement, the total amount of subsidies across eligible regions declines from 9.3 billion Euros to 1.1 billion Euros. The number of subsidized firms in the sample declines from around 12,000 to around 6,000. The distribution of firms' subsidies to investment volume is shown in Panel (b) of Figure 2 and reveals that aid intensities at the firm level are relatively constant over time. Hence, while over time fewer firms access the program, those that receive a subsidy do not see substantial changes in subsidized funds relative to the investment volume.

Using the record linkage method described in Brachert et al. (2018b), subsidized firms are matched to Amadeus identifiers except for micro firms, which are not covered by Amadeus. We construct historical financial accounts time series using various vintages of the database and sample all firms that maintain a link to savings or cooperative banks. All firm-level data obtained from Amadeus are winsorized at the 1st and 99th percentiles and we remove firm

observations with negative assets and equity, and implausible values of ratios. Bank-level analyses employ average firm controls per bank, namely corporate capitalization (ratio of equity to assets), profitability (return to assets), liquidity (the difference between current assets and current liabilities relative to total assets), and size. These variables approximate the performance and resulting loan demand of the average firm.

Regional controls: We observe in which county of a federal state a bank is located. To control for regional dynamics, we use state-time fixed effects. In robustness checks, we specify county-level GDP and household income expressed in growth rates as well as per capita to account for local economic dynamics at a more granular level. We also control for employment growth, population density, and the employment share of manufacturing firms. Finally, we include the structural weakness score (SWS) of the LMR to which a county belongs as this score drives regional eligibility.

4 Results

4.1 Bank lending and firm borrowing responses

Table 5 shows the estimation results pertaining to Equations (1) and (2).¹³ The estimated coefficient of interest β_1 to explain the log-levels of bank lending ($\ln L$) is positive and significant for the baseline specification in Column 1. This result implies a positive average impact on lending due to the exposure of banks to subsidized firms, which supports the “*loan expansion hypothesis*”. The effect is economically relevant. Bank lending increases by around 2% for a 1 percentage point increase in banks’ exposure to subsidized firms.

[Insert Table 5 here]

Columns 2 and 3 show two first-order tests to scrutinize that we only observe effects on total lending volumes, but not credit relationships between banks and subsidized firm directly.

¹³Log-levels of lending and borrowing may violate distributional assumptions of linear regressions. Online Appendix Table A1 confirms the direction of baseline effects when explaining banks’ and firms’ asset shares.

To focus on bank-firm links for which a credit relationship is likely during the subsidy period, we use two alternative definitions of the exposure variable $Subsidy_{bt}$. First, we consider only subsidized firms with an increase in borrowing during the three-year period of the investment project. For SME, the most likely source of borrowing is bank credit. Second, we capture only the links to subsidized firms with large project volumes that are financially constrained because especially these firms need further bank credit to realize the project. In line with, e.g., Almeida et al. (2004) or Fagiolo and Luzzi (2006), we define financially constrained firms in each year as those that are in the bottom 50% of the annual distribution by any two of the following traits: size, capitalization, asset share of cash holdings, or year-to-year turnover growth based on firms' sales. A subsidized firm project is considered large if, in a given year, a firm is at the top 50% of the distribution of the ratio of investment volume to total assets.

The main result holds for the alternative exposure variable definitions. In Columns 2 and 3, we estimate approximately 25% higher lending responses to these more restrictive exposure definitions. These results corroborate the notion that banks are particularly important in routing credit to firms with an above-average need for debt to co-finance subsidized projects.

In Column 4 we approximate the intensive margin of bank exposure to subsidized firms. We scale the total amount of a bank's subsidy exposure by the total volume of a bank's activities. To reduce simultaneity concerns, we scale subsidy volumes by lagged total bank assets instead of total lending volume and define $Subsidy_{bt}$ as $\frac{Subsidies_{bt}}{Total\ Assets_{bt-1}}$ with the numerator equal to the total amount of GRW subsidies received by all corporate customers of bank b at time t . Results in Column 4 of Table 5 corroborate the baseline result. The coefficient $\hat{\beta}_1 = 0.0109$ is statistically significant at the 5% level, which implies that a one standard deviation increase of the exposure variable results in an additional 3.2 million Euros of lending per bank on average¹⁴ or an increase by 0.002 standard deviations of the outcome variable.¹⁵ This result also obtains when estimating Equation (1) for a sub-sample of banks restricted

¹⁴3.2 million Euros $\approx (0.30 \times 0.0109) \times 1,006.8$ million Euros $\approx (\hat{\sigma}^{Subsidy} \times \hat{\beta}_1) \times \hat{\mu}^{Bank\ Lending}$.

¹⁵0.002 $\approx (0.30 \times 0.0109) \times 1,006.8$ million Euros / 1,258,190 thousand Euros $\approx (\hat{\sigma}^{Subsidy} \times \hat{\beta}_1) \times \hat{\mu}^{Bank\ Lending} / \hat{\sigma}^{Bank\ Lending}$.

to ever-eligible regions, yielding a slightly smaller magnitude.¹⁶

As a last test at the bank level, we acknowledge that even within the homogeneous group of savings and cooperative banks, lending choices might differ systematically across observable traits of financial intermediaries. Beyond the specification of according control variables, we therefore construct a matched sample of banks without any exposure to subsidized firms as explained in Section 3.1. Results in Column 5 confirm the positive and significant effect.

In Column 6, we investigate the flip-side of banks' lending activity and analyze firms' debt ($\ln D$). All GRW subsidized firms constitute the treatment group, to which we match counterfactual firms from the same 3-digit NACE industry using the coarsened exact matching approach described in Section 3.1 using firm-level traits X_f^{Firm} . Throughout Columns 6 and 8, we specify firm-level controls lagged by one period and state-time fixed effects to control for, e.g., local business cycle dynamics and its effects on credit demand.

The firm-level results confirm the “*loan expansion hypothesis*” obtained at the bank level. The estimated coefficient of interest $\hat{\gamma}_1$ for the model with $\ln D$ as the dependent variable is positive and significant in Column 6 of Table 5. On average, subsidized firms' demand for debt increases significantly compared to non-subsidized, but otherwise similar firms. Because $Subsidy_{ft}$ is here an indicator variable, we follow van Garderen and Shah (2002) to quantify the effect in firm-level specifications. A GRW subsidy increases debt borrowed from banks by around 76%.¹⁷ Column 7 shows the result for the sample resulting from the second, more conservative matching strategy based on industry *and* regional bins of potential counterfactual firms described in Section 3.1.2. The coefficient $\hat{\gamma}_1 = 0.4991$ is significant at the 1% level and indicates that receiving a GRW subsidy increases debt borrowed from banks by around 62%, corresponding to a hike of 35.5 thousand Euros.¹⁸

Finally, we specify in Column 8 an approximation of the intensive margin of subsidies

¹⁶The coefficient estimate $\hat{\beta}_1 = 0.0099$ is significant at the 5% level. Results are available upon request.

¹⁷van Garderen and Shah (2002) suggest to calculate in semi-logarithmic equations with a dichotomous explanatory variable $100 \times (\exp(\hat{\gamma}_1 - 0.5\hat{\sigma}^2) - 1)$, where $\hat{\sigma}^2$ refers to the estimated variance of $\hat{\gamma}_1$. Compared to the average level of debt, this implies an increase by 17 thousand Euros (76% of 22 thousand Euros).

¹⁸We calculate as before: $100 \times (\exp(0.4991 - 0.5 \cdot 0.1683^2) - 1) = 62\% \times 56.93$ thousand Euros.

received by firms. We augment Equation (2) with an interaction of the Subsidy_{ft} indicator variable and a continuous proxy for subsidy intensity, $\widehat{\text{Subsidy}}_f^{\text{Intens.}}$. The latter equals the demeaned value of $\frac{\text{Subsidy}_{fT}}{\text{Total Assets}_{fT-1}}$, whereas Subsidy_{fT} and $\text{Total Assets}_{fT-1}$ are the total amount of GRW subsidies received by firm f in year $t = T$ and the amount of total assets in the year prior to receiving the subsidy $t = T - 1$. As in the bank-level regressions, we scale by firm size to avoid simultaneity issues. Further, we demean the measure to ease interpretation. The coefficient obtained for the Subsidy_{ft} indicator, $\hat{\gamma}_1$, thus yields the impact of GRW subsidies for firms with an average subsidy amount.¹⁹ The estimation sample comprises only subsidized firms in eligible regions, which explains the larger sample size in Column 8 compared to Column 7. The core finding remains robust to this alternative specification. The estimated coefficient for Subsidy_{ft} of 0.2377 is statistically significant and corresponds to a 26%, on average 25 thousand Euros, increase in borrowing by subsidized firms in response to the subsidy. The interaction term in Column 8 is, in turn, statistically insignificant.

In sum, the joint consideration of banks' and firms' balance sheets leads us to reject the alternative *"irrelevance hypothesis"* and *"reallocation hypothesis"* from Table 1. Exposure to GRW subsidies does neither appear to substitute for equity in conducted projects nor to merely scale up projects without affecting subsidized firms' borrowing. It also does not spark a reallocation of credit towards non-subsidized firms following a decline in borrowing by subsidized firms. Instead, our results support the *"loan expansion hypothesis"* and the effects summarized by Panel (e) of Figure 1. These results underpin the importance of banks in the GRW program: beyond verifying firms' applications, banks provide more loans to firms that conduct subsidized investment projects and expand lending in regional credit markets.

4.2 Lending expansion or crowding-out non-subsidized borrowers?

Under the assumption that recipient firms would have conducted their projects also without a subsidy, the headline results suggest that GRW subsidies have sparked credit demand. How-

¹⁹Note that $\widehat{\text{Subsidy}}_f^{\text{Intens.}}$ is time-invariant and therefore absorbed by firm fixed effects in Column 8.

ever, if the subsidy is a necessary condition to turn a project profitable, we also hypothesized in Panel (b) of Table 1 that *additional* bank borrowing by subsidized firms might displace bank borrowing by non-subsidized firms. Such dynamics could undermine the effectiveness of the program for local development and speak in favor of the “*crowding-out hypothesis*”. Ideally, we would exploit planned, but canceled investments by non-subsidized firms due to credit frictions, neither one of which are alas observed by researchers.

Instead, we test the “*crowding-out hypothesis*” indirectly from both the firm and the bank perspective. Regarding the former, we follow Berg et al. (2021) to separate direct treatment from indirect spillover effects of subsidies on corporate borrowing more clearly. Their key insight is that any (quasi-random) treatment of cross-sectional subjects, in our case equity transfers to firms, also has an effect on non-treated subjects and even other treated firms. They propose intuitive mechanisms for such spillovers, namely competitive interactions of firms in the same industry and/or region through local demand and agglomeration effects. Econometrically, such dynamics amount to a challenge of the stable unit of observation assumption (SUTVA) in models of causal inference. Berg et al. (2021) show that a simple diagnostic of possible spillovers is to augment the direct treatment effect in an interaction model with two additional terms that gauge the spillover effects on treated firms and non-treated firms, respectively. To that end, we estimate:

$$\begin{aligned}
 \ln D_{ft} = & \beta_S \text{Subsidy}_{ft}^{01} + \\
 & \beta_T \overline{\text{Av. Subsidy}_{fgt}^{\text{LOO}}} \cdot \text{Subsidy}_{ft}^{01} + \\
 & \beta_C \overline{\text{Av. Subsidy}_{fgt}^{\text{LOO}}} \cdot (1 - \text{Subsidy}_{ft}^{01}) \cdot + \\
 & \beta_F X_{ft} + \beta_{SWS} SWS_{ct} + \alpha_f + \alpha_t + \epsilon_{ft},
 \end{aligned} \tag{3}$$

where Subsidy_{ft}^{01} is the firm-level subsidy indicator equal to 1 in the years after firm f received a subsidy and 0 otherwise. The according coefficient gauges the direct borrowing responses of treated firms.

To assess the role of spillovers, Berg et al. (2021) define a spillover variable for each firm f

as the leave-one-out average treatment to subjects in the relevant peer group g . Accordingly, we define the metric $\overline{\text{Av. Subsidy}}_{fgt}^{\text{LOO}}$ as the leave-one-out average of subsidies received by all firms except firm f in group g at time t and calculate:

$$\overline{\text{Av. Subsidy}}_{fgt}^{\text{LOO}} = \frac{1}{\text{N Firms}_g} \sum_{\substack{f \in g \\ f \neq i}} \text{Subsidy Amount}_{fgt},$$

where group g refers to all firms in the same county or to all firms linked to the same bank(s) as firm f in year t . Thereby, we can separate within-regional and within-bank spillovers on corporate borrowing that arise from GRW subsidies granted to peers. Furthermore, we specify firm-level controls X_{ft} as in the baseline model, the structural weakness score ($SW S_{ct}$) of county c , as well as firm (α_f) and year (α_t) fixed effects.

The coefficient β_S captures the 'direct' treatment effect of receiving a subsidy. Additionally, we obtain estimates for 'indirect' spillovers of GRW subsidies received by all other firms in the same group g as firm f . The coefficient β_T reflects the spillover effect of subsidies firms on treated firms borrowing from the same bank or which reside in the same county whereas β_C gauges spillovers on non-subsidized firms for which Subsidy_{ft}^{01} takes a value of 0.

The estimation results for Equation (3) are reported in Table 6. Column 1 depicts results resembling the baseline firm-level specification in Table 5, but for a sample of all German firms to gauge potential spillovers to non-treated firms. Since we also include the structural weakness score, the sample is limited to the years 2006–2020 due to the availability of $SW S_{ct}$.

[Insert Table 6 here]

The first upshot of this table is that the positive and significant average effect of receiving a subsidy on corporate borrowing is confirmed also for this large, non-matched sample. Second, the main result obtains also after accounting for spillover effects in the vein of Berg et al. (2021). The coefficient for the Subsidy^{01} variable that gauges the direct effect of subsidy treatment on firm borrowing is positive and significant when accounting for within-region (Column 2) and within-bank (Column 3) spillovers. Third, significantly positive point

estimates of β_T and β_C indicate the presence of positive spillovers on both treated and non-treated firms for both peer group definitions. Hence, all results at the firm-level based on this more explicit specification of spillover effects support the *loan expansion hypothesis*.

Regarding economic magnitudes, the direct effect of treatment for the within-region spillover specification in Column 2 is commensurate with an increase in firm borrowing by 43%, or 14 thousand Euros on average, using the van Garderen and Shah (2002) approach, which is rather similar to the 76% hike estimated in the baseline specification for a matched sample. In addition, we estimate an increase in borrowing by 1.8% (0.6 thousand Euros) and 10% (3 thousand Euros) due to the indirect spillover effects on treated and untreated firms.

The joint economic magnitude of these treatment components is also comparable when we account for within-bank spillovers in Column 3. The three effects generate an increase of firm borrowing by 19% (direct effect on treated), 12% (indirect effect on treated) and 1.1% (indirect effect on non-treated), or an average additional 13.7 thousand Euros of borrowing in total. Taken together, the estimation approach of Berg et al. (2021) to account more explicitly for spillover effects on firm borrowing lends strong support to the *loan expansion hypothesis* and significantly positive spillover effects of moderate economic magnitude indicate that the GRW program did not distort credit markets.

We turn next to circumstantial tests of a potential crowding out effect of non-subsidized firms from the angle of banks. As hypothesized in Section 2.1, the displacement of credit to non-subsidized firms hinges on additional credit demand by subsidized firms and on loan supply L^S frictions that vary across banks. Columns 3 and 4 in Table 6 concern the latter. The first potential lending friction is bank capitalization because lower equity buffers vis-à-vis regulatory minimum requirements imply a reduced capacity to originate new loans. Thus, additional demand by subsidized firms that would not have conducted a project without additional government funds should be more likely to receive funds from better capitalized banks. A second L^S friction pertains to sufficient shares of liquid assets, such as cash and money market assets, that banks can intermediate into loans of longer maturity. Similar to

minimum capital requirements, banks have to meet prudential liquidity requirements, such as the liquidity coverage ratio or the net stable funding ratio. Accordingly, we expect banks with larger liquidity buffers to be able to lend more to subsidized firms.

We implement these tests by interacting the baseline $Subsidy_{bt}$ indicator and both $L^S friction$ proxies and estimate an augmented variant of Equation (1) as:

$$\ln L_{bt} = \phi_0 + \phi_1 Subsidy_{bt} + \phi_2 L^S friction_{bt-1} + \phi_3 Subsidy_{bt} \times L^S friction_{bt-1} + \phi_4 X_{bt-1}^{Bank} + \phi_5 \bar{X}_{bt-1}^{Firm} + \alpha_b + \alpha_{st} + \epsilon_{bt}. \quad (4)$$

To ease interpretation, we demean both $L^S friction$ proxies, such that the parameter estimates of $\hat{\phi}_1$ in Columns 3 and 4 of Table 6 show effects for the average capitalized or liquid bank. Both bank-level specifications confirm the significantly positive effect of a larger share of subsidized firms in banks' credit portfolios on bank lending. Regarding the proxies for potential loan supply constraints, we find that the average capitalized banks tends to lend more, while the opposite is observed for liquidity. The coefficients of the interaction terms, $\hat{\phi}_3$, are either not or only marginally significantly different from zero suggesting that these frictions do not result in differential effects of the subsidy exposure on bank lending. This interpretation is supported by the total marginal effects of banks' subsidy exposure across capitalization and liquidity distributions shown in Figure 3, which always yield positive bank lending responses.

[Insert Figure 3 here]

Taken together, the bank-level results indicate that less constrained banks in terms of capital meet additional demand by subsidized firms without reducing lending to non-subsidized firms in their customer portfolios, thereby further corroborating the “*loan expansion hypothesis*”.

4.3 Subsidies, loan quality, and bank risk

The joint assessment of banks’ and firms’ balance sheets unequivocally indicates that subsidies under the GRW program unfolded a multiplier effect in local credit markets of eligible regions. However, government support of some borrowers may affect the risk-profile of banks adversely, as shown by Wilcox and Yasuda (2019) in a stylized model in which larger shares of loan guarantees increase credit portfolio risk. We therefore test if banks with more links to customers that receive GRW subsidies exhibit higher risk by estimating a variant of Equation (1), in which we replace the dependent variable with two bank risk proxies and an interaction term gauging two potential mechanisms that we discuss shortly:

$$\begin{aligned}
 Risk_{bt} = & \eta_0 + \eta_1 Subsidy_{bt} + \eta_2 Monitoring_{bt} + \eta_3 Subsidy_{bt} \times Monitoring_{bt} \\
 & + \eta_4 X_{bt-1}^{Bank} + \eta_5 \bar{X}_{bt-1}^{Firm} + \alpha_b + \alpha_{st} + \epsilon_{bt}.
 \end{aligned} \tag{5}$$

The sample and specification resemble those in Section 3.1.1. The first proxy for the risk of bank b in year t is the share of non-performing loans (NPL) relative to total loans measured in percent. It gauges the concern that subsidies might induce banks to provide credit to projects they would not have funded otherwise, thereby increasing credit risk.²⁰ The second proxy measures risk as the distance to default of the entire bank using the Z-Score. More precisely, we take the natural logarithm of $((\frac{Equity}{Assets} + ROA)/\theta_{ROA} + 1)$, where θ_{ROA} is the standard deviation of banks’ return on assets which is calculated for each bank b at year t based on all the available years from T_b up to t with T_b being the first year available in the sample for bank b (Noth and Tonzer, 2017). Higher values of the Z-score reflect a lower distance to default of the bank.

[Insert Table 7 here]

Column 1 of Table 7 demonstrates that banks with a higher exposure to subsidized borrowers do also incur higher credit risk. An increase of subsidized customers as a share

²⁰We also conduct an explicit test for potentially assortative matching between “bad” banks to “bad” firms, see Section 4.5.3 for a discussion.

of all firm relationships by one percentage point increases the NPL share by 26 basis points. This effect is moderate given an average NPL share of 2.83%.²¹ The effect on total bank risk as gauged by the Z-Score is, however, not statistically affected by the presence of more subsidized credit customers, as we cannot reject $\hat{\eta}_1 = 0$ in Column 4.

A mechanism for increased bank risk is that GRW subsidies increase the equity stake of firms in a given project, which reduces banks’ incentives to monitor the customer due to reduced “skin in the game”. The literature on the importance of banks’ screening and monitoring skills for bank lending and stability is abundant. Degryse et al. (2021) highlight that sectoral experience can have negative implications for monitoring incentives using syndicated loan data. De Jonghe et al. (2019) find for negative liquidity shocks that Belgian banks decide more positively on lending depending on their sectoral market share and experience.

Against the backdrop of this evidence, we test the effect of different *Monitoring* expertise across banks on risk. We specify an interaction term between GRW subsidy exposure and *Monitoring* expertise in Equation (5) which are measured by two variables that approximate local and sector expertise. The former is measured by a bank’s local asset share within a county. The latter is defined as the weighted average of the relationship lengths of a bank with the sectors it is linked to, where sectors are defined along the 2-digit NACE codes and weights are defined as the number of firms to which a bank is linked in a specific sector. We again demean the proxies for monitoring expertise for the ease of interpretation.

Columns 2 and 3 of Table 7 show that a higher local asset share increases loan quality mildly, yet significantly whereas sector expertise has no direct effect on NPL shares. These weak effects do also not differ significantly across banks that are more or less exposed to subsidized borrowers, as indicated by the interaction terms $\hat{\eta}_3$. Columns 5 and 6 indicate that bank stability benefits from both local and sector expertise as both direct terms are significantly positive. The coefficients for both direct as well as interacted *Subsidy* variables are, in turn, not statistically different from zero.

²¹A one standard deviation increase in the subsidy exposure implies an increase in the NPL share by 0.06 standard deviations: $0.06 \approx (0.49 \times 0.2616) / 2 = (\hat{\sigma}^{Subsidy} \times \hat{\eta}_1) / \hat{\sigma}^{NPL\ Sh.}$.

This result bodes well for possible concerns that subsidies may undermine bank stability. Whereas loan quality apparently deteriorates, possibly an inevitable side-effect of expanding credit also to some borrowers that would not have obtained credit without the subsidy program, this additional credit risk does not seem to jeopardize bank stability as a whole.

4.4 Lending response dynamics

The GRW program spans multiple business cycles and the sample period includes a number of extreme events, such as, for example, the financial crisis. Therefore, we scrutinize in particular whether bank lending results differ across the three different subsidy periods. The first period from 2000 to 2006 exhibits the highest subsidy amounts as shown in Panel (a) of Table 4. The second period between 2007 and 2014 features the highest share of exposed banks in the sample. The third period ranges from 2015 to 2019 and exhibits declining aid intensities in Germany due to the EU enlargement and an improved ranking of German regions vis-à-vis other EU regions. Coincidentally, the different subsidy periods align with different business cycle periods, i.e., expansion versus financial and sovereign debt crisis.

[Insert Table 8 here]

Results for the subsamples are shown in Table 8. Column 1 replicates the baseline result for the full sample and Columns 2 through 4 correspond to the three subsidy periods. Whereas the coefficient of interest is qualitatively identical across all subsamples, a precise point estimate for the positive effect on loan volumes only obtains for the subperiod 2007–2014 in Column 3. This result might reflect the largest share of exposed banks in this period and the lifting of financing constraints during the crisis years due to the subsidy program.

To zoom into the crisis years, we augment the baseline setup with an interaction of the *Subsidy* variable and a set of yearly dummies in Column 2 of Online Appendix Table A4. Columns 3-10 consider the differential effect of each year separately by introducing an interaction with a year dummy being equal to one for year t and zero otherwise. The results

in Column 2 confirm the average positive impact of banks' subsidy exposure on bank lending in the reference year, 2007, which is mitigated in 2009, 2010, and 2013. This finding might indicate negative repercussions of the economic downturn due to the crisis. When considering differential effects of selected years compared to the average effect, banks linked to subsidized firms increased their lending more in 2012. In 2013 – a year of low economic growth – we estimate the opposite effect. These results complement Anginer et al. (2014), who find that the guarantee implied by deposit insurance increases bank risk in good times but supports banks during crises. In our setting, firm subsidies support lending during a period including the financial crisis without impairing bank stability.

Next, we account for the fact that lending effects of subsidies might build up over time. We define banks' exposure variable based on links to subsidized firms for the first year of the project and include different leads and lags of the variable $Subsidy_{bt-\tau}$. Thereby, we test for lending dynamics around the time when banks get exposed to subsidized firms. We estimate 12 variants of the baseline model in Equation (1) for $Subsidy_{bt-\tau}^\tau$ with $\tau \in \{-4, -3, -2, -1, 0, 1, 2, 3, 4, 5, 6, 7\}$:

$$\ln L_{bt} = \beta_0 + \beta_1^\tau Subsidy_{bt-\tau}^\tau + \beta_2 X_{bt-1}^{Bank} + \beta_3 \bar{X}_{bt-1}^{Firm} + \alpha_b + \alpha_{st} + \epsilon_{bt}, \quad (6)$$

such that $\tau = 1$ refers to the coefficient estimate if we lag the exposure variable by one year, and so on. We plot $\hat{\beta}_1$ for the different leads and lags of τ in Figure 4. We estimate the model using the full sample.²² The left-hand side of Figure 4 shows that the increase in loans is temporary and tapers off after two years, which is in line with the three year deadline during which subsidized firms need to realize the project.

[Insert Figure 4 here]

We then turn to analyze corporate firms' borrowing dynamics by estimating, similar to

²²Results based on the matched sample are virtually identical and available upon request.

Equation (2) specified in section 3.1.2, the time-varying effect of receiving a subsidy:

$$\ln D_{ft} = \gamma_0 + \sum_{\tau=-4; \tau \neq -1}^{\tau} \gamma_1^{\tau} \text{Subsidy}_{ft-\tau} + \gamma_2 X_{ft-1}^{\text{Firm}} + \alpha_f + \alpha_t + \varepsilon_{ft}, \quad (7)$$

where $\text{Subsidy}_{ft+\tau}$ is a firm-specific dummy variable being one τ years before or after a firm received a subsidy, and zero otherwise. We do not include the dummy for the year before the firm received the subsidy ($\tau = -1$), which then constitutes the reference category.

The right-hand panel of Figure 4 shows the according lead- and lag-specific parameter estimates for firms' borrowing responses to receiving a subsidy obtained from the matched firm sample. These estimates reveal a positive impact on borrowing compared to the reference period during the subsidized project period of three years, which is well in line with the bank-level results showing an increase in loan volumes during the initial three years of the subsidy period. Hence, the observed transitory impact on firm borrowing fits to the subsidy period and suggests that GRW subsidies have not created additional loan uptakes in the years following the subsidized investment period.

4.5 Limitations, concerns, and further tests

4.5.1 Do GRW eligibility determinants confound bank lending responses?

The location of firms in counties that are nested in eligible LMRs is not independent of regional economic traits. Therefore, changes in observed bank lending may reflect underlying structural characteristics that co-determine eligibility rather than the exposure of banks to subsidized firms. As a first scrutiny check, we therefore compare bank outcomes and controls used in the bank-level regression across banks in all counties to banks in counties ranked between the 25th and the 75th percentiles of the structural weakness score. Applying the latter restriction implies that we exclude regions where it is relatively certain that firms will or won't be eligible. Online Appendix Table A3 reveals that observable traits in this sample of similar regions do not differ significantly from traits in the full sample.

Next, we scrutinize the concern of confounding factors when explaining log-lending $\ln L$ at the bank-level in Online Appendix Table A5. Column 1 replicates the baseline result. To control for local economic dynamics that might affect bank lending directly, we include in Column 2 the county-level controls described in Section 3.2. The coefficient of interest as well as the coefficients of virtually all control variables are unaffected regarding direction, significance, and practically magnitude.

To further trace out potentially confounding effects due to banks being located in dissimilar regions, we consider the matched sample and include in Column 3 only banks that are located in eligible counties, that is where firms have access to the subsidy program. In Column 4, we also consider the matched sample and banks in eligible regions and, in addition, keep only banks in regions that are more similar to each other in terms of criteria that define subsidy eligibility. This means that the sample is limited to banks located in counties ranking among the 25th and 75th percentiles of the distribution of the structural weakness score as in Online Appendix Table A3. Across all these specifications, the main results remain intact.

In sum, we find little indication that regional macroeconomic conditions that co-determine eligibility confound the effect of subsidy exposure on bank lending documented until here. In fact, this result is not too surprising given the institutional determination of the program's modalities. Next, we scrutinize the role of firm controls and the dynamics of measuring subsidy exposure.

4.5.2 Bad controls, timing subsidized investments, and GRW periods

In Column 5, we exclude the firm-level controls as they showed limited evidence for having an impact and might, in fact, represent bad controls. In Column 6, we define banks' exposure to the GRW program based on links to subsidized firms but base the calculations only on the first year of the subsidized project. Across both specifications, the coefficient of interest remains significant. Omitting firm controls or focusing on the first years of the link to subsidized firms increases the estimate. This result might indicate that firm controls gauging

credit demand are relevant to include in order to avoid an upward bias. Further, probably most of the credit dynamics take place directly when the firms receive the subsidy and need additional funds to realize the project.

Next, we account for the long time span of each subsidy period and possible adjustment effects in Column 7. We sample only matched bank pairs for which the treated banks have been exposed to subsidized firms in the first two years of each subsidy period and keep the bank-year observations up to 4 years after the start of the respective period.²³ The coefficient for banks' exposure to subsidized firms remains qualitatively similar but cannot be estimated precisely given the much lower sample size.

4.5.3 Selection bias: do banks anticipate treatment?

Whereas banks cannot directly self-select into treatment, concerns about selection bias could arise if banks systematically establish relationships with subsidized firms. The practice of SME to approach their Hausbank to audit financing plans mitigates such concerns. Beyond the institutional setting, we conduct three empirical tests, which are available upon request.

First, we estimate the likelihood to observe a credit relationship between any bank b and any firm f in any year t during the entire sample period. For this panel of approximately 34 million observations pertaining to approximately 2.3 million distinct bank-firm pairs, the share of within variation in the likelihood of observing a relationship explained by the relationship status in the previous year is almost 40%. The discriminatory power of a panel logistic regression is very high, exhibiting an Area under the ROC curve of 0.799 for a model with past relationships lagged by one and three years, respectively. Thus, contemporaneous bank-firm links depend very largely on whether the tie existed already before.

Second, we explicitly focus on newly formed connections from the perspective of both banks and firms. Regarding banks, we regress the eligibility status of a bank's home county together with lagged bank and firm controls as well as state-time and bank fixed effects on the

²³For example, for the first subsidy period starting in 2000, we only keep a savings bank if it had a link to a subsidized firm in 2000 or 2001. If this is the case, we include the years 2000-2004 in the estimations.

number of newly formed firm relationships, without finding a statistically significant effect. From the perspective of firms, we replace the dependent variable in Equation (7) with the number of new links to banks and estimate on the matched firm sample the parameters for leads and lags of $Subsidy_{f,t+\tau}$. None of these parameters is statistically different from zero.

Third, we test if “bad” banks match systematically more often with “bad” firms. Systematic opportunistic lending may result in a form of risk-shifting due to subsidies in the vein of Jiménez et al. (2024), leading to spurious correlations between bank lending and subsidy indicators. To test for possible endogeneity concerns of this kind, we therefore specify an indicator variable equal to 1 in year t when firm f receives a GRW subsidy and explain it by a proxy for the quality of banks, with which the firm is associated.²⁴ None of the characteristics related to bank performance (capitalization, liquidity, ROA, or LLP) affect the probability that a firm receives a subsidy. Adding interaction terms of bank and firm quality when explaining the probability to receive a subsidy yield also no significant results. Thus, the subsidy allocation seem to be unaffected by the combination of banks with a weak loan portfolios and weakly capitalized firms.

In sum, we find no evidence that would suggest that banks systematically seek to enter relationships with firms that are subsidized.

5 Conclusion

Industrial policies have recently gained in importance also in advanced economies. Whereas the effects of government subsidies on firm investment and employment have been studied extensively, we are the first to scrutinize whether subsidies distort local credit markets. Our sample spans the universe of German regional banks from 1998 to 2019, and we link these banks to mostly smaller and medium-sized enterprises with which they maintain a relationship. By drawing on information regarding firms’ access to the most important place-based program over recent decades, we observe, which firms received a subsidy, and can

²⁴In addition, we saturate the regression with lagged bank and firm controls as well as fixed effects.

approximate the exposures of banks to subsidized firms precisely.

We leverage this comprehensive sample at the bank-firm level to analyze both sides of regional credit markets, bank lending and firm borrowing, to isolate direct and indirect credit market responses to government subsidies of non-financial firms. The institutional setting of the subsidy program contains exogenous elements, most importantly the determination of eligible regions at the EU level and dynamic adjustments regarding subsidy intensity, which help to reduce confounding factors, next to controlling for local demand side conditions.

We find that banks that are more exposed to subsidized firms exhibit a significant increase in loan volumes, indicating first support for what we coin the *loan expansion hypothesis*. Firm-level results lend further support to this hypothesis. We show that firms that obtain a subsidy exhibit a significant increase in borrowing. Importantly, we reject various alternative narratives, most importantly the *crowding-out hypothesis*. We find no evidence that the GRW subsidies crowd out credit to non-subsidized firms. Accounting more explicitly for potential spillovers on both non-subsidized and subsidized firms yields, in fact, significantly positive additional borrowing of moderate magnitudes. From a financial stability perspective, it is important to note that we find no evidence for a deterioration of banks' credit portfolio in terms of risk-taking. Also, we cannot confirm that poorly performing banks are systematically more likely to match with poorly performing firms. Taken together, these results bode well for bank stability being unaffected by this place-based program.

In sum, regional credit markets appear to have not been distorted by this place-based subsidy program, which assigns an integral role to regional lenders. Instead, the GRW unfolded positive multiplier effect on both bank lending and firm borrowing.

References

- Abuka, C., Alinda, R.K., Minoiu, C., Peydró, J.L., Presbitero, A.F., 2019. Monetary policy and bank lending in developing countries: Loan applications, rates, and real effects. *Journal of Development Economics* 139, 185–202.
- Almeida, H., Campello, M., Weisbach, M.S., 2004. The Cash Flow Sensitivity of Cash. *The Journal of Finance* 59, 1777–1804.
- Altavilla, C., Ellul, A., Pagano, M., Polo, A., Vlassopoulos, T., 2021. Loan Guarantees, Bank Lending and Credit Risk Reallocation. Working Paper 629. Centre for Studies in Economics and Finance.
- Anginer, D., Demirguc-Kunt, A., Zhu, M., 2014. How does deposit insurance affect bank risk? evidence from the recent crisis. *Journal of Banking & Finance* 48, 312–321.
- Bachas, N., Kim, O.S., Yannelis, C., 2021. Loan guarantees and credit supply. *Journal of Financial Economics* 139, 872–894.
- Banerjee, A.V., Duflo, E., 2014. Do Firms Want to Borrow More? Testing Credit Constraints Using a Directed Lending Program. *The Review of Economic Studies* 81, 572–607.
- Berg, T., Reisinger, M., Streitz, D., 2021. Spillover effects in empirical corporate finance. *Journal of Financial Economics* 142, 1109–1127.
- Bersch, J., Degryse, H., Kick, T., Stein, I., 2020. The real effects of bank distress: Evidence from bank bailouts in Germany. *Journal of Corporate Finance* 60, 101521.
- Brachert, M., Dettmann, E., Titze, M., 2018a. Public Investment Subsidies and Firm Performance – Evidence from Germany. *Jahrbücher für Nationalökonomie und Statistik* 238, 103–124.
- Brachert, M., Dettmann, E., Titze, M., 2019. The regional effects of a place-based policy – Causal evidence from Germany. *Regional Science and Urban Economics* 79, 103483.

- Brachert, M., Giebler, A., Heimpold, G., Titze, M., Urban-Thielicke, D., 2018b. IWH-Subventionsdatenbank: Mikrodaten zu Programmen direkter Unternehmenssubventionen in Deutschland. IWH Technical Reports 02. Halle Institute for Economic Research.
- Bronzini, R., de Blasio, G., 2006. Evaluating the impact of investment incentives: The case of Italy's Law 488/1992. *Journal of Urban Economics* 60, 327–349.
- Brown, J.D., Earle, J.S., 2017. Finance and Growth at the Firm Level: Evidence from SBA Loans. *The Journal of Finance* 72, 1039–1080.
- Carletti, E., Leonello, A., Marquez, R., 2023. Loan guarantees, bank underwriting policies and financial stability. *Journal of Financial Economics* 149, 260–295.
- Cerqua, A., Pellegrini, G., 2014. Do subsidies to private capital boost firms' growth? a multiple regression discontinuity design approach. *Journal of Public Economics* 109, 114–126.
- Core, F., De Marco, F., 2021. Public Guarantees for Small Businesses in Italy during Covid-19. CEPR Discussion Paper 15799. Center for Economic Policy Research.
- Criscuolo, C., Martin, R., Overman, H.G., Van Reenen, J., 2019. Some causal effects of an industrial policy. *American Economic Review* 109, 48–85.
- Custodio, C., Bonfim, D., Raposo, C.C., 2021. The Sensitivity of SME's Investment and Employment to the Cost of Debt Financing. Available at SSRN: <https://ssrn.com/abstract=3879737>.
- Dam, L., Koetter, M., 2012. Bank Bailouts and Moral Hazard: Evidence from Germany. *The Review of Financial Studies* 25, 2343–2380.
- De Jonghe, O., Dewachter, H., Mulier, K., Ongena, S., Schepens, G., 2019. Some borrowers are more equal than others: Bank funding shocks and credit reallocation. *Review of Finance* 24, 1–43.

- Degryse, H., Kokas, S., Minetti, R., 2021. Banking on Experience. CEPR Discussion Paper 16142. Centre for Economic Policy Research.
- Dwenger, N., Fossen, F.M., Simmler, M., 2020. Firms' financial and real responses to credit supply shocks: Evidence from firm-bank relationships in Germany. *Journal of Financial Intermediation* 41, 100773.
- Ehrlich, M.v., Seidel, T., 2018. The Persistent Effects of Place-Based Policy: Evidence from the West-German Zonenrandgebiet. *American Economic Journal: Economic Policy* 10, 344–74.
- Elsas, R., 2005. Empirical determinants of relationship lending. *Journal of Financial Intermediation* 14, 32–57.
- Elsas, R., Krahen, J.P., 1998. Is relationship lending special? Evidence from credit-file data in Germany. *Journal of Banking & Finance* 22, 1283–1316.
- Fagiolo, G., Luzzi, A., 2006. Do liquidity constraints matter in explaining firm size and growth? Some evidence from the Italian manufacturing industry. *Industrial and Corporate Change* 15, 1–39.
- Falck, O., Koenen, J., Lohse, T., 2019. Evaluating a place-based innovation policy: Evidence from the innovative regional growth cores program in East Germany. *Regional Science and Urban Economics* 79, 103480.
- van Garderen, K.J., Shah, C., 2002. Exact interpretation of dummy variables in semilogarithmic equations. *The Econometrics Journal* 5, 149–159.
- Gropp, R., Gruendl, C., Guettler, A., 2013. The Impact of Public Guarantees on Bank Risk-Taking: Evidence from a Natural Experiment. *Review of Finance* 18, 457–488.
- Haas Ornelas, J.R., Pedraza Morales, A.E., Ruiz Ortega, C., Silva, T., 2019. Winners and

- Losers When Private Banks Distribute Government Loans: Evidence from Earmarked Credit in Brazil. Policy Research Working Paper Series 8952. The World Bank.
- Imbens, G.W., Wooldridge, J.M., 2009. Recent developments in the econometrics of program evaluation. *Journal of Economic Literature* 47, 5–86.
- Iyer, R., Peydró, J.L., da Rocha-Lopes, S., Schoar, A., 2014. Interbank liquidity crunch and the firm credit crunch: Evidence from the 2007-2009 crisis. *The Review of Financial Studies* 27, 347–372.
- Jiménez, G., Laeven, L., Martínez-Miera, D., Peydró, J.L., 2024. Public guarantees, private banks' incentives, and corporate outcomes: evidence from the COVID-19 crisis. Technical Report. European Central Bank.
- Jiménez, G., Ongena, S., Peydró, J.L., Saurina, J., 2012. Credit Supply and Monetary Policy: Identifying the Bank Balance-Sheet Channel with Loan Applications. *American Economic Review* 102, 2301–26.
- Jiménez, G., Ongena, S., Peydró, J.L., Saurina, J., 2014. Hazardous times for monetary policy: what do twentythree million bank loans say about the effects of monetary policy on credit risk-taking? *Econometrica* 82, 463–505.
- Koetter, M., Noth, F., Rehbein, O., 2020. Borrowers under water! Rare disasters, regional banks, and recovery lending. *Journal of Financial Intermediation* 43, 100811.
- Koulischer, F., Pierret, D., Steri, R., 2021. The Visible Hand when Revenues Stop: Evidence from Loan and Stock Markets during Covid19. Available at SSRN: <https://ssrn.com/abstract=3735052>.
- Lehmann, E., Neuberger, D., 2001. Do lending relationships matter?: Evidence from bank survey data in Germany. *Journal of Economic Behavior & Organization* 45, 339–359.

- Minoiu, C., Zarutskie, R., Zlate, A., 2021. Motivating Banks to Lend? Credit Spillover Effects of the Main Street Lending Program. Available at SSRN: <https://ssrn.com/abstract=3773242>.
- Noth, F., Tonzer, L., 2017. Bank risk proxies and the crisis of 2007/09: a comparison. *Applied Economics Letters* 24, 498–501.
- Popov, A., Rocholl, J., 2018. Do credit shocks affect labor demand? Evidence for employment and wages during the financial crisis. *Journal of Financial Intermediation* 36, 16–27.
- Puri, M., Rocholl, J., Steffen, S., 2011. Global retail lending in the aftermath of the US financial crisis: Distinguishing between supply and demand effects. *Journal of Financial Economics* 100, 556–578.
- Siegloch, S., Wehrhöfer, N., Etzel, T., 2025. Spillover, Efficiency and Equity Effects of Regional Firm Subsidies. *American Economic Journal: Economic Policy* , forthcoming.
- Wilcox, J.A., Yasuda, Y., 2019. Government guarantees of loans to small businesses: Effects on banks' risk-taking and non-guaranteed lending. *Journal of Financial Intermediation* 37, 45–57.

Tables

Table 1: Hypotheses and associated correlations in bank- and firm-level regressions

<i>Hypothesis</i>	<i>Case</i>	Banks	Subsidized firms		Non-subsidized firms	
		Lending L	Debt D_S	Investment I	Debt D_{NS}	Investment I
Panel I: Positive NPV compared to case (a) in Figure 1 without subsidy S						
Irrelevance	(b)	0	0	1	0	1
Substitution	(c)	-	-	1	0	1
Reallocation	(c)	0	-	1	+	1
Irrelevance	(d)	0	0	> 1	0	1
Expansion	(e)	+	+	> 1	0	1
Panel II: Negative NPV compared to no investment I without subsidy S						
Crowding out		0	+	1	-	0
Expansion		+	+	1	0	0

Notes: This table shows the expected correlations between subsidy indicators and lending L in bank-level regressions and borrowing D in firm-level regressions for each of the hypotheses developed in Section 2. The columns distinguish banks, subsidized, and non-subsidized firms for each of the associated cases regarding funding structure and investment volume I depicted in Figure 1. The symbols “0/+/-” indicate no/positive/negative significant changes in response to subsidies in bank- and firm-level regressions, respectively. Panel I summarizes hypotheses if investment projects are also profitable without subsidies, thus formulating expected differential effects relative to case (a) in 1. Panel II summarizes hypotheses if projects are only conducted if firms receive a subsidy, as indicated in the last column of this table, which therefore apply to all cases depicted in Figure 1.

Table 2: Variable description

Variable	Description	Source
Bank-Level Regressions		
<i>Dependent variables:</i>		
$\ln L$	Natural logarithm of loan volume (loans in thousands of EUR)	Bankfocus
NPL Share	Ratio of non-performing to total loans (in %)	Bankfocus
Z-Score	$\ln \left(\left(\frac{\text{Equity}}{\text{Assets}} + \text{ROA} \right) / \theta_{\text{ROA}} + 1 \right)$ where ROA is return on assets and θ_{ROA} is calculated for each bank b at year t based on all the available years from T_b up to t with T_b being the first year available in the sample for bank b	Bankfocus
<i>Bank controls:</i>		
Subsidy $_b$:	Exposure of a bank to subsidized firms (in %). The exposure is defined as ...	GRW, Dafne
Subsidy $_b^{\% F}$... the share of links to subsidized firms relative to the number of links to all (including non-subsidized) firms, calculated as follows : $\frac{\text{N Subs. Firms}_{bt}}{\text{N Firm Links}_{bt}}$	
Subsidy $_b^{\% A}$... the share of total subsidy volume received by linked firms relative to the total volume of lagged assets of a bank, calculated as follows: $\frac{\text{Subsidies}_{bt}}{\text{Total Assets}_{bt-1}}$ The link to a subsidized firm is assumed to be present throughout the whole length of a project, which is legally set to be equal to three years	
Capitalization	Ratio of equity to total assets (in %)	Bankfocus
Cost to Income	Cost to income ratio (in %)	Bankfocus
ROA	Return on assets (in %)	Bankfocus
Liquidity	Ratio of liquid assets to total assets (in %)	Bankfocus
Size	Natural logarithm of total assets (assets in thousands of EUR)	Bankfocus
Local Asset Share	Ratio of assets to total assets of banks from the same county (in %)	Bankfocus
Sectoral Experience	Weighted average of the relationship lengths of a bank with the sectors it is linked to (in number of years). Sectors are defined along the 2-digit NACE codes. Weights are defined as the number of firms to which a bank is linked in a specific sector	Dafne, Amadeus
Savings Bank Dummy	Dummy variable being one for savings banks and zero otherwise	Bankfocus
<i>Firm controls:</i>		
Capitalization	Average $\frac{\text{Equity}}{\text{Assets}}$ (in %) of firms to which bank b is linked at time t	Amadeus
ROA	Average ROA (in %) of firms to which bank b is linked at time t	Amadeus
Liquidity	Average $\frac{\text{Current Assets} - \text{Current Liabilities}}{\text{Assets}}$ (in %) of firms to which bank b is linked at time t	Amadeus
Size	Average \ln Assets of firms to which bank b is linked at time t	Amadeus

Table 2: Variable description – continued

Variable	Description	Source
Bank-Level Regressions		
<i>County controls:</i>		
GDP p.c./ Growth	GDP per capita (in thousands of EUR) or growth (in %)	Destatis
Income p.c./ Growth	Household income per capita (in thousands of EUR) or growth (in %)	Destatis
Employment Growth	Employment growth (in %)	Destatis
Population Density	Population density	INKAR
Manufacturing Share	Employment share in the manufacturing sector (in %)	Destatis
SWS	Respective labor market region’s “structural weakness score” (SWS)	GRW
Firm-Level Regressions		
<i>Dependent variables:</i>		
$\ln D$	Natural logarithm of corporate bank debt (in thousands of EUR)	Amadeus
<i>Treatment variables:</i>		
Subsidy_f	A dummy turning one if the firm received a subsidy and zero before that	GRW, Amadeus
$\text{Subsidy}_f^{\text{Intens.}}$	A measure of GRW subsidy treatment intensity of firm f , defined as the ratio of the amount of subsidy received in year $t = T$ to the value of total assets of the firm in year $t = T - 1$: $\frac{\text{Subsidy}_T}{\text{Total Assets}_{T-1}}$	GRW, Amadeus
<i>Matching variables:</i>		
Capitalization	Ratio of equity to total assets (in %)	Amadeus
Cash Ratio	Ratio of cash holdings to total assets (in %)	Amadeus
Size	Natural logarithm of total assets (assets in thousands of EUR)	Amadeus
Fixed Assets Growth	Growth rate of fixed assets (in %)	Amadeus
<i>Firm controls:</i>		
Capitalization	Ratio of equity to total assets (in %)	Amadeus
Cash Ratio	Ratio of cash holdings to total assets (in %)	Amadeus
Size	Natural logarithm of total assets (assets in thousands of EUR)	Amadeus
<i>GRW intensity at county level:</i>		
Total amount of subsidies	Total amount of GRW subsidies granted in county c in which firm f is located and at time t in millions of EUR	GRW
Number of subsidized firms	Number of firms that received GRW subsidies in county c in which firm f is located and at time t	GRW

Table 3: Descriptives

	N Obs. Full Sample (1)	Mean Full Sample (2)	SD Full Sample (3)	Mean Non-exposed (4)	Mean Exposed (5)	Normalized Difference (6)
Bank-Level Regressions						
<i>Dependent variables:</i>						
ln L	17,120	13.25	1.07	13.08	13.51	0.29 *
NPL Share	7,337	2.83	2.04	2.73	3.00	0.09
Z-Score	17,120	1.28	0.47	1.29	1.26	-0.04
<i>Treatment variables:</i>						
Subsidy _b ^{% F}	17,120	0.21	0.49	0.00	0.55	-
Subsidy _b ^{% A}	17,120	0.07	0.30	0.00	0.18	-
<i>Bank controls:</i>						
Capitalization	17,120	7.30	2.28	7.41	7.13	-0.09
Cost to Income	17,120	71.06	9.49	70.94	71.24	0.02
ROA	17,120	0.25	0.18	0.27	0.22	-0.19
Liquidity	17,120	12.32	7.22	11.75	13.23	0.14
Size	17,120	13.77	1.03	13.56	14.11	0.39 *
Local Asset Share	17,120	31.05	29.15	15.73	36.20	0.57 *
Sectoral Experience	17,120	7.40	4.34	6.97	3.32	-0.83 *
Savings Bank Dummy	17,120	0.39	0.48	0.14	0.41	0.44 *
<i>Firm controls:</i>						
Capitalization	17,120	7.57	3.22	7.50	7.70	0.04
ROA	17,120	3.83	2.13	4.00	3.55	-0.16
Liquidity	17,120	0.49	0.11	0.50	0.48	-0.15
Size	17,120	13.54	0.71	13.60	13.44	-0.17
<i>County controls:</i>						
GDP Growth	16,451	2.84	3.67	2.91	2.73	-0.04
Income Growth	16,451	2.56	2.11	2.64	2.44	-0.07
Employment Growth	16,451	0.78	1.26	0.87	0.64	-0.13
GDP p.c.	16,451	30.80	12.52	31.95	28.94	-0.17
Income p.c.	16,451	23.77	4.96	25.04	21.71	-0.50 *
Population Density	16,451	0.43	0.57	0.42	0.46	0.06
Manufacturing Share	16,451	29.07	8.40	30.03	27.52	-0.21
SWS	16,451	100.06	0.73	99.92	99.51	-0.71 *
Firm-Level Regressions						
<i>Dependent variables:</i>						
ln D	38,787	3.11	5.54	2.44	3.76	0.17
<i>Matching & control variables:</i>						
Capitalization	34,816	8.14	13.18	8.72	7.73	-0.05
Liquidity	34,816	15.75	17.91	17.45	14.15	-0.13
Size	34,816	14.63	1.64	14.54	14.69	0.06
Fixed Assets Growth	34,377	14.00	50.00	11.00	17.00	0.09
Subsidy _f ^{Intens.}	26,453	19.37	35.86	17.66	20.18	0.07
$\widehat{\text{Subsidy}}_f^{\text{Intens.}}$	26,453	-0.95	35.86	-2.66	-0.14	0.07

This table shows summary statistics of the dependent and control variables used in the baseline models of bank- and firm-level regressions (Columns 1-3) and compares the mean values by exposure status (Columns 4-6). For bank-level regression, Column 4 shows mean values for control group banks and Column 5 for exposed banks for which the variable Subsidy_b is larger than zero. In case of firms, exposure refers to firms with an approved subsidy (Subsidy_f being 1) and the sample of unexposed firms contains those that are matched to exposed (i.e. subsidized) ones. Column 6 depicts the normalized difference in means between exposed and unexposed. In Column 6 * indicates the cases with normalized difference larger than 0.25 in magnitude (Imbens and Wooldridge, 2009). See Table 2 for a detailed description of every variable.

Table 4: Subsidy program size and banks' exposure

	Subsidy periods			
	2000-2006	2007-2014	2015-2020	2000-2020
Panel (a): Program characteristics				
Average maximum aid intensity (%)	36.0	38.7	29.1	34.1
Total amount of subsidies (bil. EUR)	9.3	7.2	1.1	17.6
Average amount of subsidies (bil. EUR)	1.3	0.9	0.2	0.8
Number of subsidized firms	21,652	17,542	8,884	48,078
Estimation sample	12,043	11,492	6,236	29,771
Average actual aid intensity (%)	26.2	30.1	26.8	27.7
Estimation sample	26.1	30.3	27.7	28.0
Panel (b): Bank exposure measures				
i) Average number of exposed banks per year				
Baseline	139	504	342	831
Eligible regions	101	333	248	485
Non-eligible regions	38	171	94	346
ii) Average share of exposed banks to all banks per county				
Baseline	30	53	43	42
Eligible regions	51	81	71	68
Non-eligible regions	11	25	16	17
iii) Average subsidy exposure per year in %				
Baseline	0.64	0.62	0.38	0.55
Eligible regions	0.81	0.85	0.47	0.71
Non-eligible regions	0.21	0.16	0.14	0.17
Financially constrained and large projects				
Eligible regions	0.40	0.31	0.21	0.31
Non-eligible regions	0.45	0.36	0.22	0.34
Non-eligible regions	0.18	0.11	0.16	0.15
Increased borrowing				
Eligible regions	0.55	0.48	0.31	0.45
Non-eligible regions	0.66	0.63	0.36	0.55
Non-eligible regions	0.20	0.14	0.13	0.16

This table shows the intensity of treatment by the GRW program in general (Panel (a)) and at the bank level (Panel (b)). Panel (a) shows descriptive statistics for the subsidy program by the three subsidy periods and for the period 2000-2020. Row 1 presents the average maximum aid intensity (maximum possible subsidy to investment volume, in %). Row 2 presents the total amount of provided subsidies in billion Euros. Row 3 shows the average yearly total subsidy amount for each subsidy period in billion Euros. Rows 4 and 5 show the number of subsidized firms for the full subsidy dataset and for our estimation sample. Rows 6 and 7 present the average (across subsidized firms) actual aid intensity (subsidy to investment volume, in %) for the full subsidy dataset and for our estimation sample. Panel(b) shows descriptive statistics for banks' exposure to the subsidy program for each of the three subsidy periods and for the period 1998-2019. In section i), the first three rows show the average number of banks exposed to subsidized firms for the baseline sample, and for the sample of banks located in eligible or non-eligible regions. In section ii), the following three rows show the average share of exposed banks relative to all banks per counties. In section iii), the remaining rows show the average exposure of banks in any given year to subsidized firms based on three exposure definitions and containing only banks with non-zero exposure values. Subsidy exposure is defined as the number of links of a bank to subsidized firms relative to all firm links in a given year (in %). In the other two cases, we restrict to subsidized firms that are either financially constrained and have large investment volumes or experience an increase in borrowing.

Table 5: Bank lending and corporate borrowing in response to GRW subsidies

	Bank lending: $\ln L$					Corporate borrowing: $\ln D$		
	Baseline	Financially Constrained & Large Project	Increased Borrowing	Subsidies _{6t} /Total Assets _{6t-1}	Matched	Matched		Subsidized
	(1)	(2)	(3)	(4)	(5)	(6)	(7)	(8)
Subsidy	0.0208*** (0.0066)	0.0247** (0.0123)	0.0252*** (0.0087)	0.0109** (0.0047)	0.0271*** (0.0081)	0.5175*** (0.1355)	0.4991*** (0.1683)	0.2377* (0.1222)
Subsidy · $\widehat{\text{Subsidy}}_f^{\text{Intens.}}$								-0.0031 (0.0546)
<i>Bank Controls (t - 1)</i>								
Capitalization	0.0050** (0.0022)	0.0050** (0.0022)	0.0050** (0.0022)	0.0050** (0.0022)	0.0003 (0.0026)			
Cost to Income	-0.0005** (0.0002)	-0.0005** (0.0002)	-0.0005** (0.0002)	-0.0005** (0.0002)	-0.0001 (0.0002)			
ROA	0.0037 (0.0097)	0.0035 (0.0098)	0.0034 (0.0097)	0.0032 (0.0098)	0.0029 (0.0117)			
Liquidity	-0.0046*** (0.0004)	-0.0046*** (0.0004)	-0.0046*** (0.0004)	-0.0046*** (0.0004)	-0.0045*** (0.0004)			
Size	0.7849*** (0.0127)	0.7855*** (0.0127)	0.7848*** (0.0127)	0.7861*** (0.0127)	0.7853*** (0.0149)			
<i>Firm Controls (t - 1)</i>								
Capitalization	-0.0012 (0.0008)	-0.0013 (0.0008)	-0.0013 (0.0008)	-0.0013 (0.0008)	-0.0003 (0.0010)	0.0086** (0.0037)	0.0095 (0.0081)	0.0012 (0.0053)
ROA	-0.0011* (0.0006)	-0.0011* (0.0006)	-0.0011* (0.0006)	-0.0011* (0.0006)	-0.0007 (0.0006)			
Liquidity	-0.0017 (0.0178)	-0.0006 (0.0179)	-0.0021 (0.0178)	-0.0003 (0.0178)	-0.0231 (0.0184)	-0.0150*** (0.0021)	-0.0176*** (0.0030)	-0.0274*** (0.0030)
Size	-0.0032 (0.0040)	-0.0031 (0.0040)	-0.0032 (0.0040)	-0.0034 (0.0040)	-0.0013 (0.0053)	0.6486*** (0.0784)	0.6726*** (0.1700)	0.8587*** (0.0982)
Bank FE	Yes	Yes	Yes	Yes	Yes	No	No	No
Firm FE	No	No	No	No	No	Yes	Yes	Yes
Time FE	No	No	No	No	No	No	No	No
State-Time FE	Yes	Yes	Yes	Yes	Yes	Yes	Yes	Yes
Bank Controls	Yes	Yes	Yes	Yes	Yes	No	No	No
Firm Controls	Yes	Yes	Yes	Yes	Yes	Yes	Yes	Yes
County Sample	All	All	All	All	All	All	Eligible	Eligible
Matched Sample	No	No	No	No	Yes	Yes	Yes	No
Matching Groups	-	-	-	-	State	NACE-3	NACE-2 x LMR	-
N of Obs.	17,120	17,120	17,120	17,120	11,460	34,816	14,811	26,453
N of Banks	1,202	1,202	1,202	1,202	794			
N of Firms						4,603	1,844	3,206
R Sq. Within	0.711	0.710	0.711	0.710	0.729	0.046	0.014	0.019

This table shows regression results where the dependent variable is either $\ln L$ (natural logarithm of loans) of bank b in year t (Columns 1–5) or $\ln D$ (natural logarithm of corporate bank debt) of firm f in year t (Columns 6–8). The samples include German savings and cooperative banks for the period from 1998 to 2019 (Columns 1–5) including a matched sample in Column 5; and German non-financial subsidized firms with one matched non-subsidized counterpart (Columns 6 and 7) and without matching (Column 8) for each for the period from 2002 to 2020 (Columns 6–8). The main variable of interest is *Subsidy*, which is either the share of subsidized firms among all links of bank b in year t (defined as the share of links to a) all subsidized firms (Columns 1 and 5), b) subsidized firms that are financially constrained and have a project of large investment volume (Column 2), and c) subsidized firms that experience an increase in borrowing in a given year (Column 3), the ratio of the total amount of GRW subsidies received by all firms of bank b in year t to the value of its total assets in year $t - 1$ (Column 4), and a dummy being 1 in the years after a firm f received a GRW subsidy and 0 otherwise (Columns 6–8). In Column 8 the *Subsidy* dummy is further interacted with demeaned time-invariant measure of firm subsidy treatment intensity $\widehat{\text{Subsidy}}_f^{\text{Intens.}}$ (defined as the ratio of the amount of subsidy received by firm f in year $t = T$ to the value of its total assets in the year $t = T - 1$). Further controls include bank-level and averaged firm-level variables of bank b in year $t - 1$ (Columns 1–5) or firm-level variables of firm f in year $t - 1$ (Columns 6–8). Bank and state-time fixed effects are added in bank-level regressions (Columns 1–5) and firm and state-time fixed effects are added in firm-level regressions in (Columns 6–8). Standard errors are clustered at the bank and firm levels, respectively, and given in parentheses. ***, **, * indicate significance at the 1%, 5%, 10% level.

Table 6: Loan expansion versus crowding-out of non-subsidized borrowers

<i>Subsidy interacted with:</i>	Corporate borrowing: $\ln D$			Bank lending: $\ln L$	
		Av. Subsidy ^{LOO} _{fet}	Av. Subsidy ^{LOO} _{fbt}	Capitalization	Liquidity
	(1)	(2)	(3)	(4)	(5)
Subsidy	0.3628*** (0.0777)	0.3615*** (0.0852)	0.1797* (0.1086)	0.0165*** (0.0063)	0.0172*** (0.0066)
Av. Subsidy ^{LOO} _{fgt} · Subsidy		0.0980*** (0.0247)	0.1130*** (0.0300)		
Av. Subsidy ^{LOO} _{fgt} · (1 - Subsidy)		0.0179*** (0.0047)	0.0113** (0.0052)		
L ^S Friction				0.0057** (0.0022)	-0.0050*** (0.0004)
Subsidy × L ^S Friction				-0.0035 (0.0028)	0.0010* (0.0005)
Firm FE	Yes	Yes	Yes	No	No
Bank FE	No	No	No	Yes	Yes
Time FE	Yes	Yes	Yes	No	No
State-Time FE	No	No	No	Yes	Yes
Firm Controls	Yes	Yes	Yes	Yes	Yes
Bank Controls	No	No	No	Yes	Yes
County Controls	Yes	Yes	Yes	No	No
County Sample	All	All	All	All	All
Matching	-	-	-	-	-
N of Obs.	1,218,043	1,218,043	960,482	17,120	17,120
N of Firms	263,068	263,068	219,981		
N of Banks				1,202	1,202
R Sq. Within	0.008	0.008	0.007	0.711	0.711

This table shows the estimation results where the dependent variable is either $\ln D$ (natural logarithm of corporate bank debt) of firm f in year t (Columns 1–3) or $\ln L$ (natural logarithm of loans) of bank b in year t (Columns 4 and 5). The two samples are German non-financial firms from counties ever-eligible for GRW subsidies from 2006 to 2020 (Columns 1–3), and German savings and cooperative banks for the period from 1998 to 2019 (Columns 4 and 5). The main variable of interest is *Subsidy*, which is either a dummy being 1 in the years after a firm f received a GRW subsidy and 0 otherwise (Columns 1–3), or the share of subsidized firms among all links of bank b in year t (Columns 4 and 5). In the firm sample, the *Subsidy* and $(1 - \text{Subsidy})$ variables are interacted with $\overline{\text{Av. Subsidy}}_{fet}^{LOO}$ and $\overline{\text{Av. Subsidy}}_{fbt}^{LOO}$ - the average (leave one out) subsidy amounts Berg et al. (2021), based on all firms located in the county c (Column 2) or linked to bank b (Column 3) while excluding firm f respectively. In the bank sample, the *Subsidy* variable and its interacted with lagged and demeaned measures of bank lending constraints - capitalization (Column 4) and liquidity (Column 5). Firm regressions controls (Columns 1–3) include lagged firm-level variables as those in Columns 6–8 of Table 5, as well as the lagged region-level structural weakness score measure. Bank regressions controls (Columns 4 and 5) include lagged bank-level as well as averaged firm-level variables as those in Columns 1–5 of Table 5. Firm and time fixed effects are added in firm-level regressions (Columns 1–3) and bank and state-time fixed effects are added in bank-level regressions (Columns 4 and 5). Standard errors are clustered at the firm and bank levels, respectively, and given in parentheses. ***, **, * indicate significance at the 1%, 5%, 10% level.

Table 7: Bank-level subsidy exposure, loan quality, and risk

	NPL Share			Z-Score		
	Baseline	Interacted		Baseline	Interacted	
	(1)	Asset Share (2)	Sectoral Experience (3)	(4)	Asset Share (5)	Sectoral Experience (6)
Subsidy	0.2616** (0.1122)	0.1171 (0.1566)	0.1830 (0.4336)	0.0040 (0.0088)	0.0024 (0.0112)	-0.0118 (0.0183)
Monitoring		-0.0057* (0.0029)	-0.2188 (0.1343)		0.0006** (0.0003)	0.0196* (0.0105)
Subsidy \times Monitoring		0.0043 (0.0028)	0.0086 (0.0415)		0.0000 (0.0002)	0.0025 (0.0023)
Bank FE	Yes	Yes	Yes	Yes	Yes	Yes
State-Time FE	Yes	Yes	Yes	Yes	Yes	Yes
Bank Controls	Yes	Yes	Yes	Yes	Yes	Yes
Firm Controls	Yes	Yes	Yes	Yes	Yes	Yes
N of Obs.	7,292	7,292	7,292	15,874	15,874	15,874
N of Banks	1,152	1,152	1,152	1,202	1,202	1,202
R Sq. Within	0.539	0.540	0.539	0.235	0.235	0.235

This table shows regression results where the dependent variable is either the Non-Performing Loans (NPL) Share (Columns 1-3) or Z-Score (Columns 4-5) of bank b in year t . The sample includes German savings and cooperative banks for the period from 1998 to 2019. The main variable of interest is *Subsidy*, which is the share of subsidized firms among all firm links of bank b in year t (Columns 1-4) as well as its interaction with the demeaned monitoring proxies Local Asset Share (Columns 2 & 5) and Sectoral Experience (Columns 4 & 6) of bank b at time t . Further controls include bank-level and averaged firm-level variables of bank b in year $t - 1$ as those in Columns 1-5 of Table 5. Bank and state-time fixed effects are added. Standard errors clustered at the bank level are given in parentheses. ***, **, * indicate significance at the 1%, 5%, 10% level.

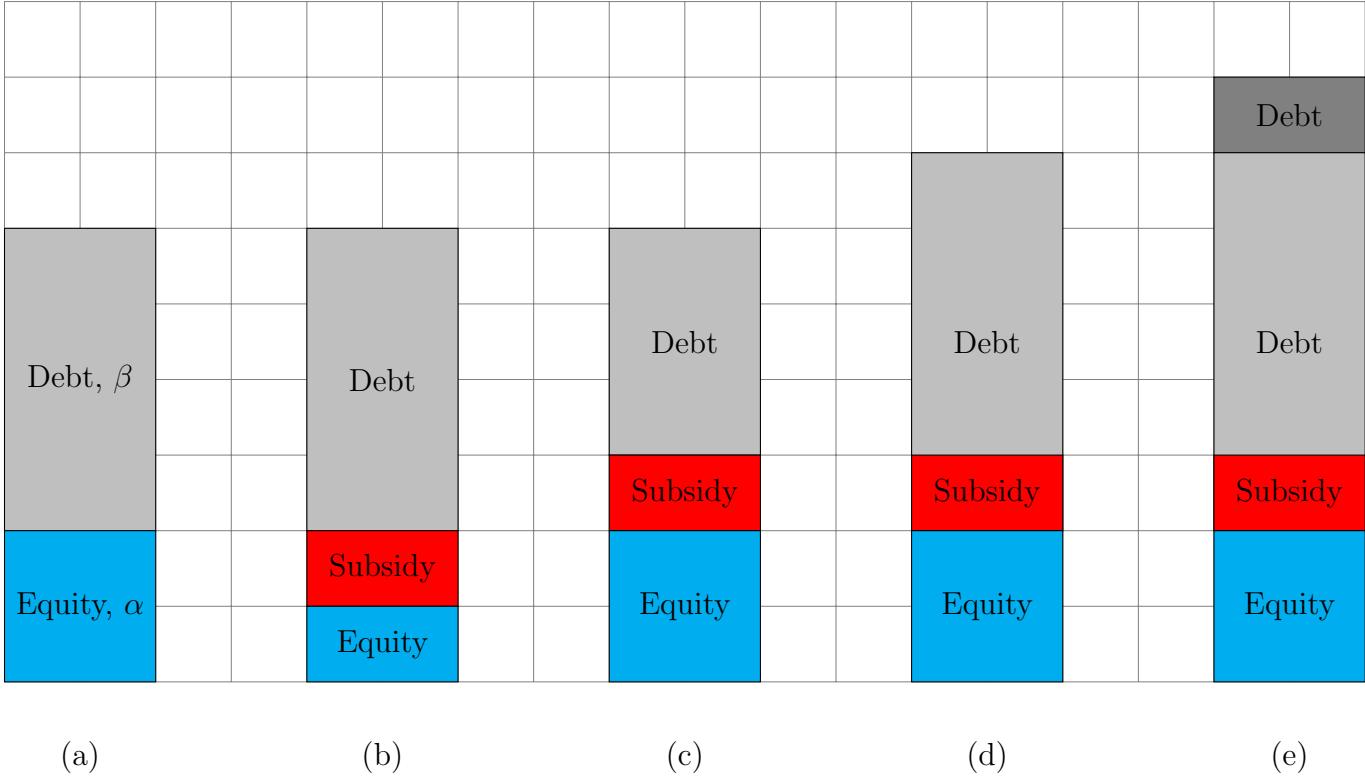
Table 8: Impact of GRW subsidies on bank lending over business cycle

	Bank lending: $\ln L$			
	Baseline (1)	2000-2006 (2)	2007-2014 (3)	2015-2019 (4)
Subsidy	0.0208*** (0.0066)	0.0267 (0.0175)	0.0215*** (0.0069)	0.0010 (0.0116)
Bank FE	Yes	Yes	Yes	Yes
State-Time FE	Yes	Yes	Yes	Yes
Bank Controls	Yes	Yes	Yes	Yes
Firm Controls	Yes	Yes	Yes	Yes
N of Obs.	17,120	3,531	9,002	4,577
N of Banks	1,202	1,056	1,199	1,112
R Sq. Within	0.711	0.702	0.417	0.591

This table shows regression results where the dependent variable is $\ln L$ (natural logarithm of bank loans) of bank b in year t . The sample includes German savings and cooperatives banks. The period spans from 1998 to 2019 in Column 1 and is broken down by subsidy waves by looking at subsamples (Columns 2-4). The main variable of interest is *Subsidy*, which is the share of subsidized firms among all firm links of bank b in year t . Further controls include bank-level and averaged firm-level variables of bank b in year $t - 1$ as those in Columns 1-5 of Table 5. Bank and state-time fixed effects are included. Standard errors clustered at the bank level are given in parentheses. ***, **, * indicate significance at the 1%, 5%, 10% level.

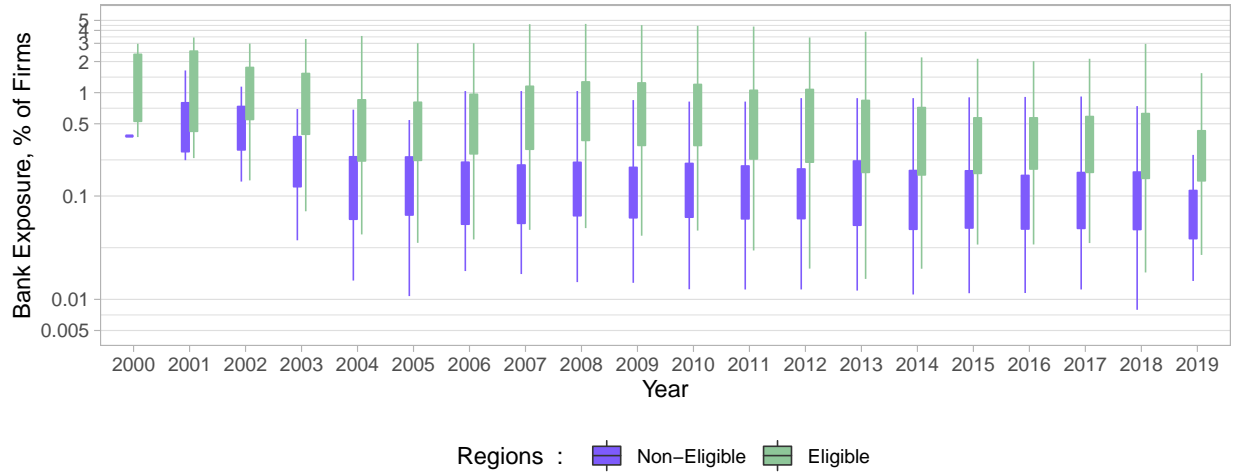
Figures

Figure 1: Stylized funding structure and volume of subsidized investment projects

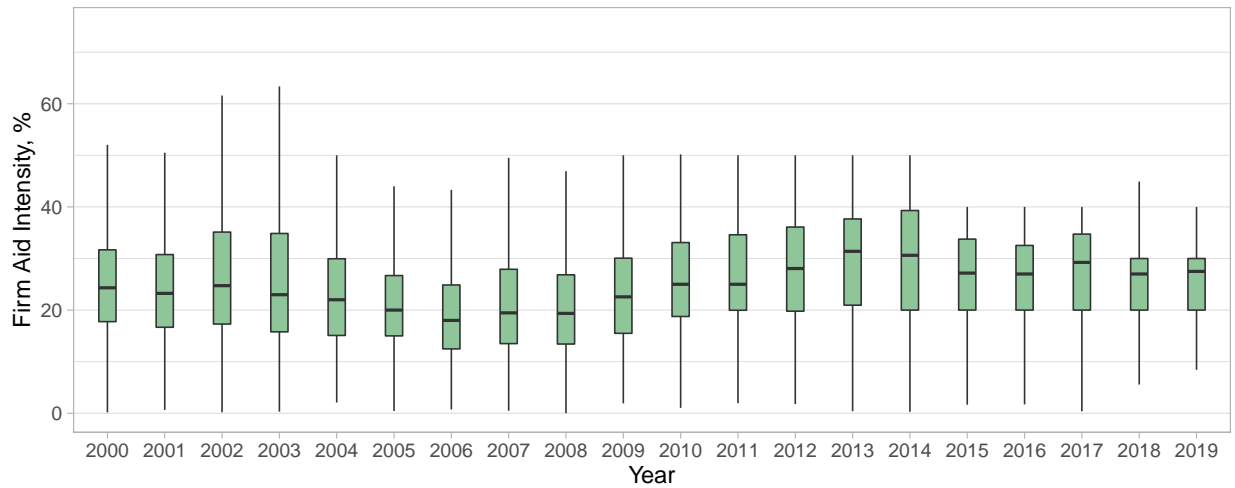


This figure illustrates four possible effects how subsidies can affect an investment project’s volume and funding structure. Case (a) depicts the baseline case of an unsubsidized project that is financed by equity and debt.

Figure 2: Banks' and firms' treatment intensity over time



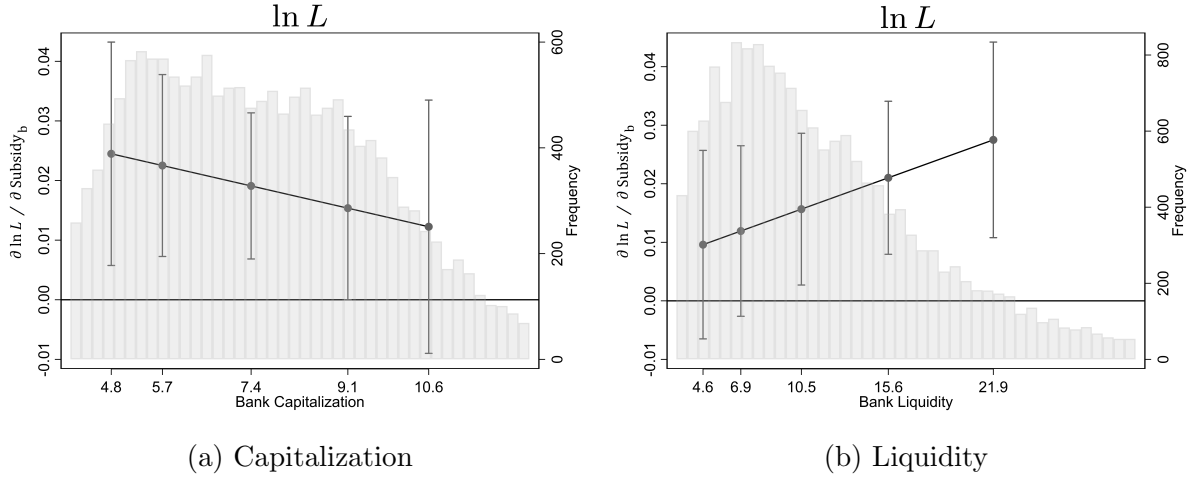
(a) Distribution of banks' exposures to subsidized firms (in % of all firms linked to a bank)



(b) Distribution of firms' subsidies to eligible investment volume (in %)

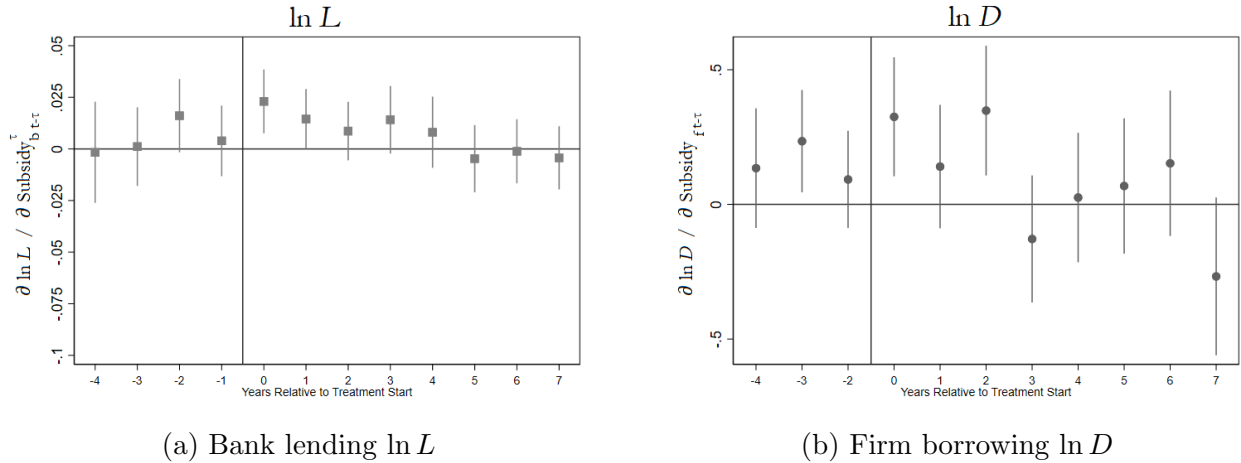
In Panel (a), banks' exposure to subsidized firms defined as the number of a bank's links to subsidized firms relative to the total number of linked firms (in %) is shown. The figure is based on the sample of banks with a non-zero exposure to subsidized firms. The purple bars represent the distribution for banks located in regions non-eligible for the subsidy, the green bars for banks located in eligible regions. Panel (b) shows how the distribution of the share of firms' subsidies in eligible investment volume (in %), or their aid intensity, evolved over time. Sources: own calculations, GRW and Dafne (Panel (a)); own calculations and GRW (Panel (b)).

Figure 3: Marginal lending effects of banks' subsidy exposure conditional on lending frictions



The figures show marginal lending effects of the variable $Subsidy_{bt}$ on the dependent variable $\ln L$ conditional on banks' (a) capitalization and (b) liquidity. The sample spans the period 1998-2019. Effects are depicted for the 10th, 25th, 50th, 75th and 90th percentiles of the conditioning bank variable and surrounded by 95% confidence intervals.

Figure 4: Dynamic effects of subsidies on bank lending and firm borrowing



The figures show the effects of the variable $Subsidy_{bt-\tau}^T$ over time on the log-level of loans $\ln L$ in Panel (a) and of the variable $Subsidy_{ft-\tau}$ on the log-level of firms' bank debt $\ln D$ in Panel (b). Panel (a) shows estimates pertaining to Equation (6) and plots the coefficient estimates for the $\hat{\beta}_1^T$ coefficients and the 95% confidence bands. Subsidy exposure is based on links to subsidized firms in the first year of the subsidized project. The sample includes German savings and cooperative banks and spans the period from 1998 to 2019. Further controls include bank-level variables and averaged firm-level variables lagged by one period as those in Columns 1–5 of Table 5. Bank and state-time fixed effects are included. Panel (b) shows estimates pertaining to Equation (7) and plots the coefficient estimates for the $\hat{\gamma}_1^T$ coefficients and the 95% confidence bands. The firm sample includes German firms and spans the period from 2002 to 2020 including a treatment group of subsidized firms and a control group of firms of the same 3-digit NACE industry matched using the coarsened exact matching approach based on the values of firms' assets, cash ratio, capitalization, and fixed assets growth (%) as of one year before the firm received the subsidy. Further controls include firm-level variables lagged by one period. Firm and time fixed effects are included and standard errors are clustered at the firm level. ***, **, * indicate significance at the 1%, 5%, 10% level. See Table 2 for a detailed description of all variables.

Online Appendix

Determination of countries' state aid application

On the one hand, state aid schemes like the GRW program are likely to distort competition within the Internal Market of the European Union (EU). On the other hand, economic, social and territorial cohesion represent important goals and core values of the EU. To solve this trade-off, the legal framework of the EU contains exemptions for aid granted by Member States, where the regional coverage of state aid is limited to a certain population share living in assisted areas (usually around 40%), which is then broken down to the Member States. In general, these exemptions are kept constant over the period of the EU's long-term budget (EU funding periods), usually periods of seven years. Member States applying for any aid that might distort competition in the EU are obligated to notify the program to the EU. Related documents submitted by the member states are then reviewed at the EU level in a rigorous formal evaluation process before the decision is made whether this aid is compatible with the principles of the Internal Market. The derogation process takes into account different degrees of structural weaknesses that are mirrored in different maximum aid intensities an EU country can apply. The derogation relies on two rules: *first*, the Guidelines on National Regional Aid (differentiating between A-areas representing regions where the standard of living is abnormally low or where there is serious underemployment and C-areas representing regions where such aid does not adversely affect trading conditions to an extent contrary to the common interest) and *second*, the block exemption to certain categories of horizontal state aid (D-areas).

Additional tables

Table A1: Bank lending and corporate borrowing scaled by total assets

	Share of Loans in Assets			Share of Corporate Debt in Assets		
	Baseline (1)	Financially Constrained & Large Project (2)	Increased Borrowing (3)	Matched (4)	Matched (5)	Matched (6)
Subsidy	0.6571*** (0.2450)	0.6525 (0.4755)	0.5833* (0.3256)	0.0271*** (0.0081)	0.4580*** (0.1544)	0.2839 (0.3545)
<i>Bank Controls (t - 1)</i>						
Capitalization	0.4391*** (0.1070)	0.4392*** (0.1069)	0.4392*** (0.1070)	0.0003 (0.0026)		
Cost to Income	0.0318*** (0.0096)	0.0318*** (0.0096)	0.0318*** (0.0096)	-0.0000 (0.0002)		
ROA	0.0849 (0.4391)	0.0772 (0.4399)	0.0738 (0.4399)	0.0029 (0.0117)		
Liquidity	-0.2176*** (0.0175)	-0.2175*** (0.0176)	-0.2176*** (0.0176)	-0.0045*** (0.0004)		
Size	-0.5491 (0.5690)	-0.5296 (0.5705)	-0.5476 (0.5696)	0.7853*** (0.0149)		
<i>Firm Controls (t - 1)</i>						
Capitalization	-0.0616 (0.0385)	-0.0650* (0.0386)	-0.0634 (0.0385)	-0.0003 (0.0010)		-0.0260 (0.0162)
ROA	-0.0538** (0.0273)	-0.0535* (0.0273)	-0.0530* (0.0273)	-0.0007 (0.0006)		-0.0629*** (0.0102)
Liquidity	0.1365 (0.8301)	0.1794 (0.8317)	0.1477 (0.8296)	-0.0231 (0.0184)		-3.1776*** (0.4284)
Size	-0.5144*** (0.1888)	-0.5137*** (0.1886)	-0.5167*** (0.1886)	-0.0013 (0.0053)		0.7765*** (0.2467)
Bank FE	Yes	Yes	Yes	Yes	No	No
Firm FE	No	No	No	No	Yes	Yes
State-Time FE	Yes	Yes	Yes	Yes	Yes	Yes
Bank Controls	Yes	Yes	Yes	Yes	No	No
Firm Controls	Yes	Yes	Yes	Yes	No	No
N of Obs.	17,120	17,120	17,120	11,460	38,530	13,325
N of Banks	1,202	1,202	1,202	794		
N of Firms					4,643	2,096
R Sq. Within	0.238	0.238	0.238	0.729	0.015	0.043

This table shows regression results where the dependent variable is either the asset share of loans for bank b in year t (Columns 1-4) or the asset share of corporate bank debt of firm f in year t (Columns 5-6). The two samples are German savings and cooperative banks for the period from 1998 to 2019 (Columns 1-4) including a matched sample in Column 4; and German non-financial subsidized firms with one matched non-subsidized counterpart for each for the period from 2002 to 2020 (Columns 5-6). The main variable of interest is *Subsidy*, which is either the share of subsidized firms among all links of bank b in year t (defined as the share of links to a) all subsidized firms (Column 1), b) subsidized firms that are financially constrained and have a project of large investment volume (Column 2), and c) subsidized firms that experience an increase in borrowing in a given year (Column 3), or a dummy being 1 in the years after a firm f received a GRW subsidy and 0 otherwise (Columns 5-6). Further controls include bank-level and averaged firm-level variables of bank b in year $t - 1$ (Columns 1-4) or firm-level variables of firm f in year $t - 1$. Bank and state-time fixed effects are added in bank-level regressions (Columns 1-4) and firm and time fixed effects are added in firm-level regressions (Columns 5-6). Standard errors are clustered at the bank and firm levels, respectively, and given in parentheses. ***, **, * indicate significance at the 1%, 5%, 10% level.

Table A2: Descriptives for the matched sample of banks

	N Obs.	Mean	SD	Mean Non-exposed	Mean Exposed	Normalized Difference
	(1)	(2)	(3)	(4)	(5)	(6)
Bank-Level Regression						
<i>Matching & control variables:</i>						
Subsidy _{<i>b</i>}	11460	0.10	0.34	0.00	0.27	0.523 *
Capitalization	11460	7.48	2.34	7.54	7.37	-0.053
Cost to Income	11460	70.61	9.50	70.58	70.65	0.005
ROA	11460	0.28	0.20	0.28	0.26	-0.067
Liquidity	11460	12.21	6.90	12.13	12.32	0.019
Size	11460	13.47	0.85	13.36	13.66	0.247

This table shows summary statistics for the matched sample of banks underlying the estimation in Column 5 of Table 5. Ever- and never-exposed banks from the same state and banking group are matched based on capitalization, cost to income ratios, ROA, liquidity, and size. The mean values of these variables for banks in the control (never-exposed) and treatment (ever-exposed) group are shown in Columns 4-6. For banks in the control group, the variable Subsidy_{*b*} is by definition equal to zero. Column 6 depicts the normalized difference in means between exposed and unexposed banks. In Column 6 * indicates the cases with normalized difference larger than 0.25 in magnitude (Imbens and Wooldridge, 2009). See Table 2 for a detailed description of every variable.

Table A3: Descriptives, by banks in all vs. similar regions

	Mean All Regions	Mean Similar Regions	Normalized Difference
	(1)	(2)	(3)
<i>Bank Outcomes</i>			
Ln Loans	13.25	13.24	-0.01
Z-Score	1.28	1.27	-0.01
NPL Share	2.83	2.70	-0.05
<i>Bank Controls</i>			
Subsidy	0.21	0.12	-0.16
Capitalization	7.59	7.75	0.05
Cost to Income	71.31	71.09	-0.02
ROA	0.24	0.25	0.03
Liquidity	12.12	11.37	-0.08
Size	13.80	13.75	-0.04
<i>Firm Controls</i>			
Capitalization	7.27	7.32	0.01
ROA	3.92	4.08	0.06
Liquidity	0.50	0.50	0.05
Size	13.51	13.52	0.01
<i>County Controls</i>			
GDP Growth	2.85	2.84	0.00
Income Growth	2.56	2.57	0.00
Employment Growth	0.79	0.83	0.03
GDP p.c.	30.75	29.01	-0.12
Income p.c.	23.76	23.77	0.00
Population Density	0.43	0.37	-0.08
Manufacturing Share	29.08	29.55	0.04

This table shows descriptive statistics by all versus similar regions for dependent and control variables used in the baseline regression (Table 5, Column 1). The first column shows mean values for all banks, the second column for banks located in regions that are more similar to each other in terms of criteria that define subsidy eligibility. This means that the sample is limited to banks located in counties ranking among the 25th and 75th percentiles of the distribution of the structural weakness score. The third column depicts the normalized difference in means. * indicates the cases with normalized difference larger than 0.25 in magnitude (Imbens and Wooldridge, 2009). See Table 2 for a detailed description of all variable.

Table A4: Bank lending during the period 2007-2014

	Bank lending: $\ln L$									
	Baseline (1)	x Years (2)	x 2007 (3)	x 2008 (4)	x 2009 (5)	x 2010 (6)	x 2011 (7)	x 2012 (8)	x 2013 (9)	x 2014 (10)
Subsidy	0.0215*** (0.0069)	0.0364*** (0.0139)	0.0192*** (0.0068)	0.0213*** (0.0069)	0.0230*** (0.0073)	0.0232*** (0.0073)	0.0204*** (0.0070)	0.0194*** (0.0070)	0.0232*** (0.0071)	0.0218*** (0.0069)
Year=2008 × Subsidy		-0.0139 (0.0102)								
Year=2009 × Subsidy		-0.0220* (0.0130)								
Year=2010 × Subsidy		-0.0233* (0.0135)								
Year=2011 × Subsidy		-0.0080 (0.0160)								
Year=2012 × Subsidy		0.0010 (0.0176)								
Year=2013 × Subsidy		-0.0417** (0.0206)								
Year=2014 × Subsidy		-0.0259 (0.0211)								
Year Dummy=1 × Subsidy			0.0173 (0.0121)	0.0009 (0.0079)	-0.0084 (0.0077)	-0.0097 (0.0060)	0.0092 (0.0085)	0.0202* (0.0112)	-0.0291** (0.0133)	-0.0096 (0.0136)
Bank FE	Yes	Yes	Yes	Yes	Yes	Yes	Yes	Yes	Yes	Yes
State-Time FE	Yes	Yes	Yes	Yes	Yes	Yes	Yes	Yes	Yes	Yes
Bank Controls	Yes	Yes	Yes	Yes	Yes	Yes	Yes	Yes	Yes	Yes
Firm Controls	Yes	Yes	Yes	Yes	Yes	Yes	Yes	Yes	Yes	Yes
County Controls	No	No	No	No	No	No	No	No	No	No
N of Obs.	9,002	9,002	9,002	9,002	9,002	9,002	9,002	9,002	9,002	9,002
N of Banks	1,199	1,199	1,199	1,199	1,199	1,199	1,199	1,199	1,199	1,199
R Sq. Within	0.417	0.418	0.417	0.417	0.417	0.417	0.417	0.417	0.417	0.417

This table shows regression results where the dependent variable is $\ln L$ (natural logarithm of bank loans) of bank b in year t . The sample includes German savings and cooperatives banks and spans from 2007 to 2014. The main variable of interest is *Subsidy* that is defined as the share of links to subsidized firms to total links of a bank b at time t (in Column 1) and its interactions with the yearly indicators being one for the respective year and zero otherwise. Further controls include bank-level variables and averaged firm-level variables of bank b in year $t - 1$ as those in Columns 1–5 of Table 5. Bank and state-time fixed effects are included. Standard errors clustered at the bank level are given in parentheses. ***, **, * indicate significance at the 1%, 5%, 10% level. See Table 2 for a detailed description of every variable.

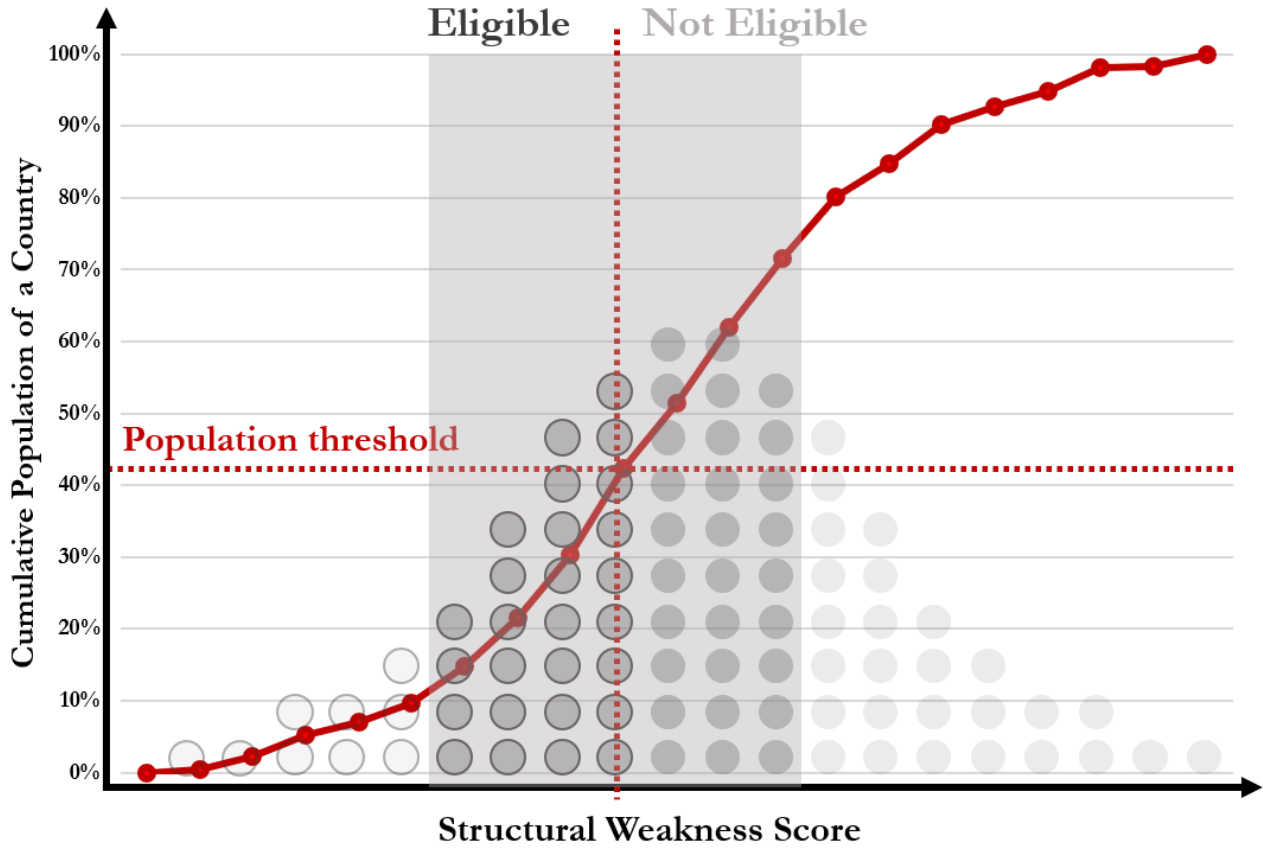
Table A5: Scrutinizing bank lending responses

	Bank lending: $\ln L$						
	Full Sample		Matched Sample		Full Sample		Matched Sample
	Baseline (1)	County Controls (2)	Eligible Regions (3)	Similar Regions (4)	W/o Firm Controls (5)	1-Year Project (6)	First 2 Years (7)
Subsidy	0.0208*** (0.0066)	0.0192*** (0.0067)	0.0233*** (0.0072)	0.0220** (0.0100)	0.0210*** (0.0067)	0.0230*** (0.0079)	0.0230 (0.0178)
<i>Bank Controls (t - 1)</i>							
Bank Capitalization	0.0050** (0.0022)	0.0055** (0.0022)	0.0084** (0.0040)	0.0034 (0.0029)	0.0050** (0.0022)	0.0050** (0.0022)	0.0159*** (0.0059)
Bank Cost to Income	-0.0005** (0.0002)	-0.0005** (0.0002)	-0.0010*** (0.0004)	-0.0010*** (0.0004)	-0.0005** (0.0002)	-0.0005** (0.0002)	-0.0001 (0.0004)
Bank ROA	0.0037 (0.0097)	0.0051 (0.0095)	0.0041 (0.0159)	0.0056 (0.0153)	0.0036 (0.0097)	0.0034 (0.0098)	0.0532** (0.0218)
Bank Liquidity	-0.0046*** (0.0004)	-0.0047*** (0.0004)	-0.0039*** (0.0007)	-0.0038*** (0.0006)	-0.0046*** (0.0004)	-0.0046*** (0.0004)	-0.0027*** (0.0008)
Bank Size	0.7849*** (0.0127)	0.7786*** (0.0135)	0.7920*** (0.0208)	0.7752*** (0.0217)	0.7843*** (0.0127)	0.7855*** (0.0127)	0.7781*** (0.0387)
<i>Firm Controls (t - 1)</i>							
Firm Capitalization	-0.0012 (0.0008)	-0.0010 (0.0008)	0.0001 (0.0016)	-0.0008 (0.0013)		-0.0013* (0.0008)	0.0007 (0.0018)
Firm ROA	-0.0011* (0.0006)	-0.0010 (0.0006)	-0.0009 (0.0012)	-0.0020** (0.0009)		-0.0011* (0.0006)	-0.0008 (0.0013)
Firm Liquidity	-0.0017 (0.0178)	-0.0032 (0.0181)	0.0283 (0.0353)	-0.0316 (0.0221)		-0.0008 (0.0178)	0.0009 (0.0303)
Firm Size	-0.0032 (0.0040)	-0.0025 (0.0041)	-0.0032 (0.0075)	0.0013 (0.0075)		-0.0033 (0.0040)	-0.0090 (0.0082)
Bank FE	Yes	Yes	Yes	Yes	Yes	Yes	Yes
State-Time FE	Yes	Yes	Yes	Yes	Yes	Yes	Yes
Bank Controls	Yes	Yes	Yes	Yes	Yes	Yes	Yes
Firm Controls	Yes	Yes	Yes	Yes	No	Yes	Yes
County Controls	No	Yes	No	No	No	No	No
N of Obs.	17,120	16,451	6,803	6,120	17,120	17,120	1,996
N of Banks	1,202	1,156	474	542	1,202	1,202	242
R Sq. Within	0.711	0.713	0.694	0.740	0.710	0.710	0.790

This table shows regression results where the dependent variable is $\ln L$ (natural logarithm of bank loans) of bank b in year t . The sample includes German savings and cooperative banks and spans the period from 1998 to 2019. The main variable of interest is *Subsidy* that is defined as the share of links to subsidized firms to total links of a bank b at time t . Column 1 shows the baseline specification, while Column 2 also includes county controls as listed in Table 2. Columns 3 and 4 show results when we match exposed and control banks (based on the variables Capitalization, Cost to Income, ROA, Liquidity and Size). In Column 3 we only include banks in eligible regions. In addition in Column 4, we exclude banks located in regions with a structural weakness score in the upper or lower quartile of the distribution. Column 5 represents the baseline specification without firm controls. In Column 6, the *Subsidy* variable is defined based on the first year of the subsidy only. In Column 8, for the matched sample, we exclude matched pairs of banks for which an exposed bank entered the treatment later than 2 years after the start of each subsidy period (i.e. we keep those banks first exposed either in 2000, 2001, 2007, 2008, 2014 or 2015). Further controls include bank-level variables and averaged firm-level variables lagged by one period. Bank and state-time fixed effects are included. Standard errors clustered at the bank level are given in parentheses. ***, **, * indicate significance at the 1%, 5%, 10% level. See Table 2 for a detailed description of all variables.

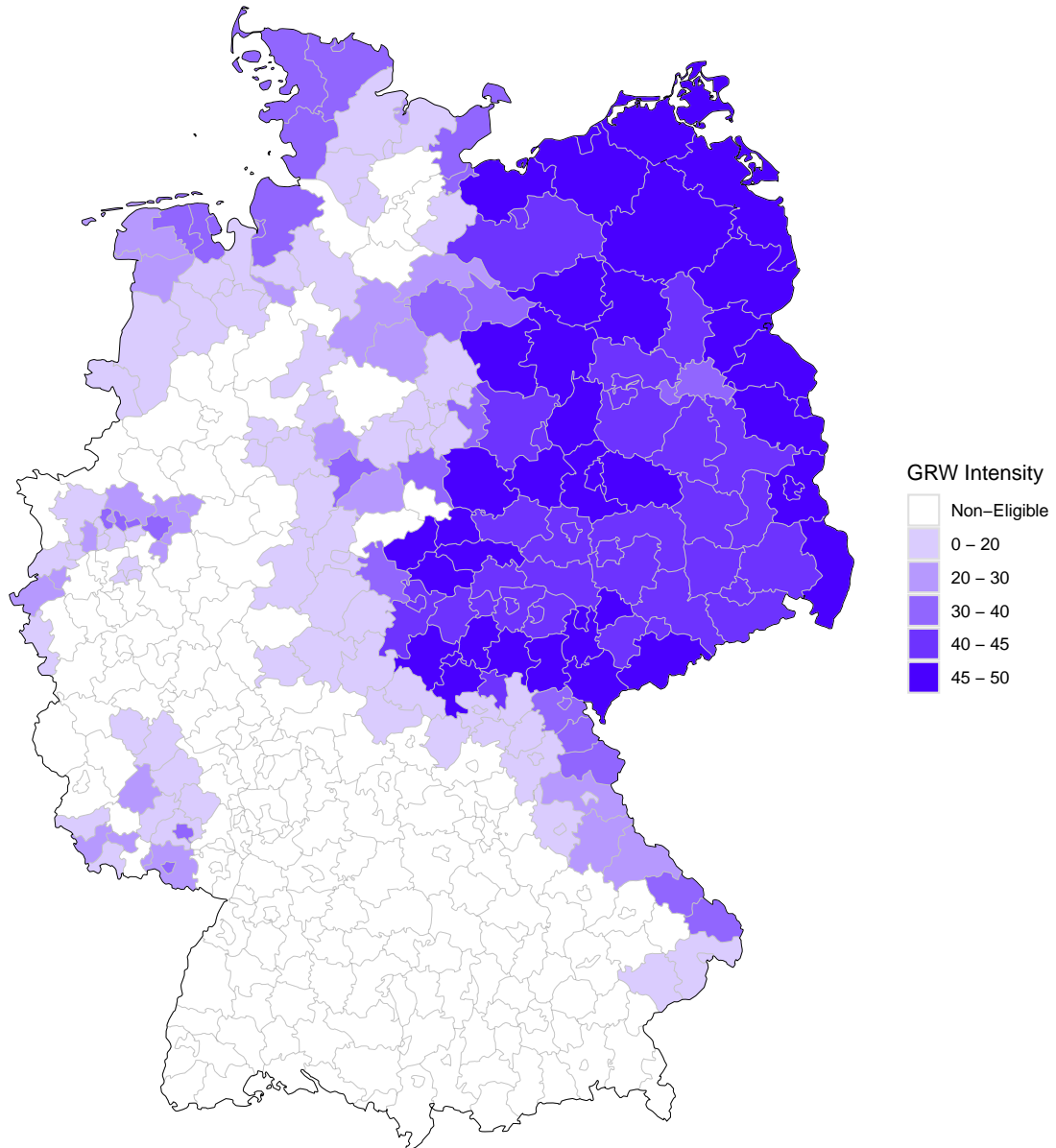
Additional figures

Figure A1: Determination of regional eligibility



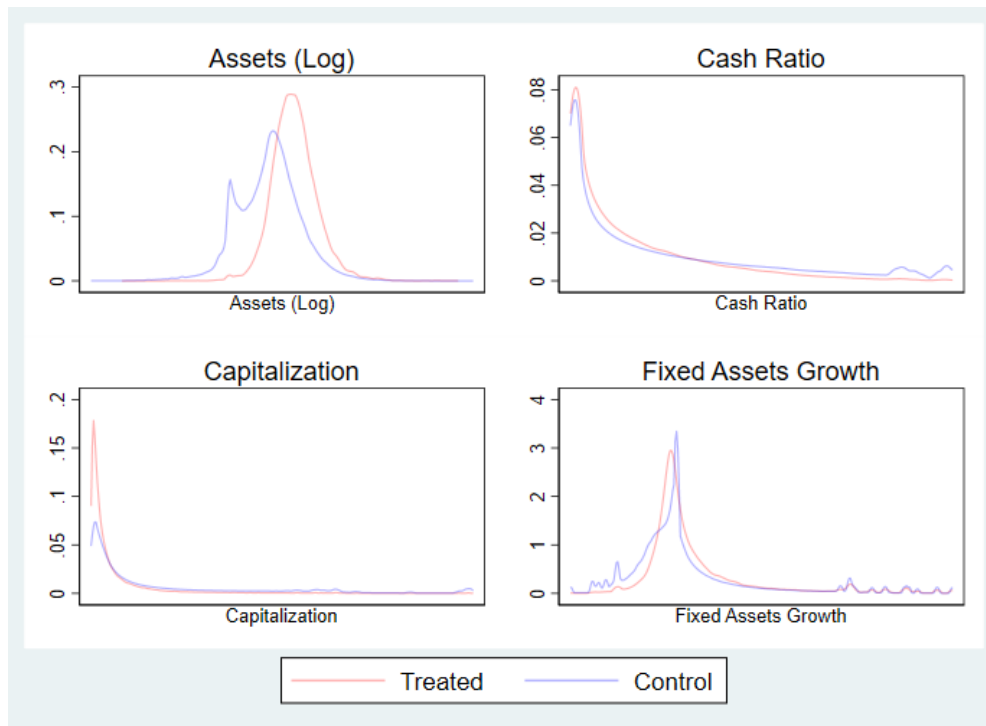
The figure illustrates the two key factors driving whether regions are eligible for the subsidy program. The x-axis depicts the structural weakness score assigned to labor market regions, the lower it is, the weaker is the region. The y-axis depicts the cumulative population share in a country's total population. For Germany, this score is close to 40% across all years. All regions in the left part are eligible due to a low weakness score and because the population threshold has not yet been hit.

Figure A2: Average aid intensity of German counties over the period 2000-2019

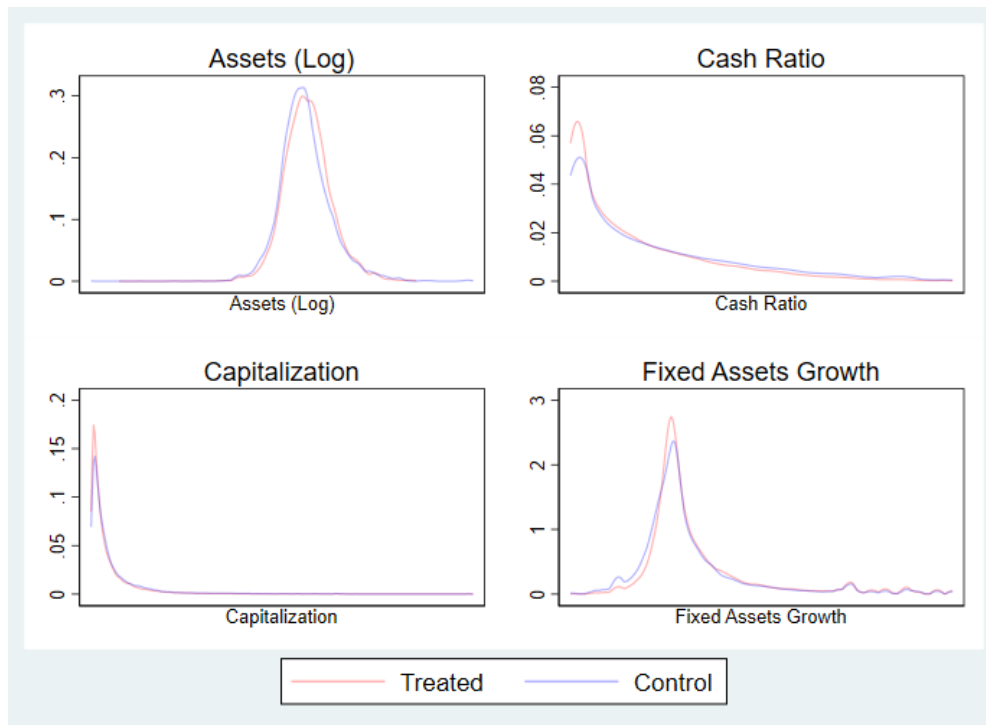


The figure illustrates the spatial distribution of aid intensities of the GRW program across Germany. Values for each county are calculated based on the average GRW intensity over the three last GRW program periods (2000-2019). Aid intensity is measured as the maximum share of the investment costs of a subsidized project, which can be covered by the subsidy.

Figure A3: Subsidized versus non-subsidized firms' characteristics pre- and post-matching



(a) Distribution of firm-level variables (pre-matching)



(b) Distribution of firm-level variables (post-matching)

The figure illustrates distributions of values for firm-level variables used to match subsidized and comparable non-subsidized firms. Panel (a) depicts the distribution before matching and Panel (b) after matching.